



ECHOES FROM MILAN 2023



A close-up photograph of several golden wheat stalks, showing the intricate details of the grain heads and the texture of the stalks. The lighting is warm, highlighting the golden-brown hues of the wheat.

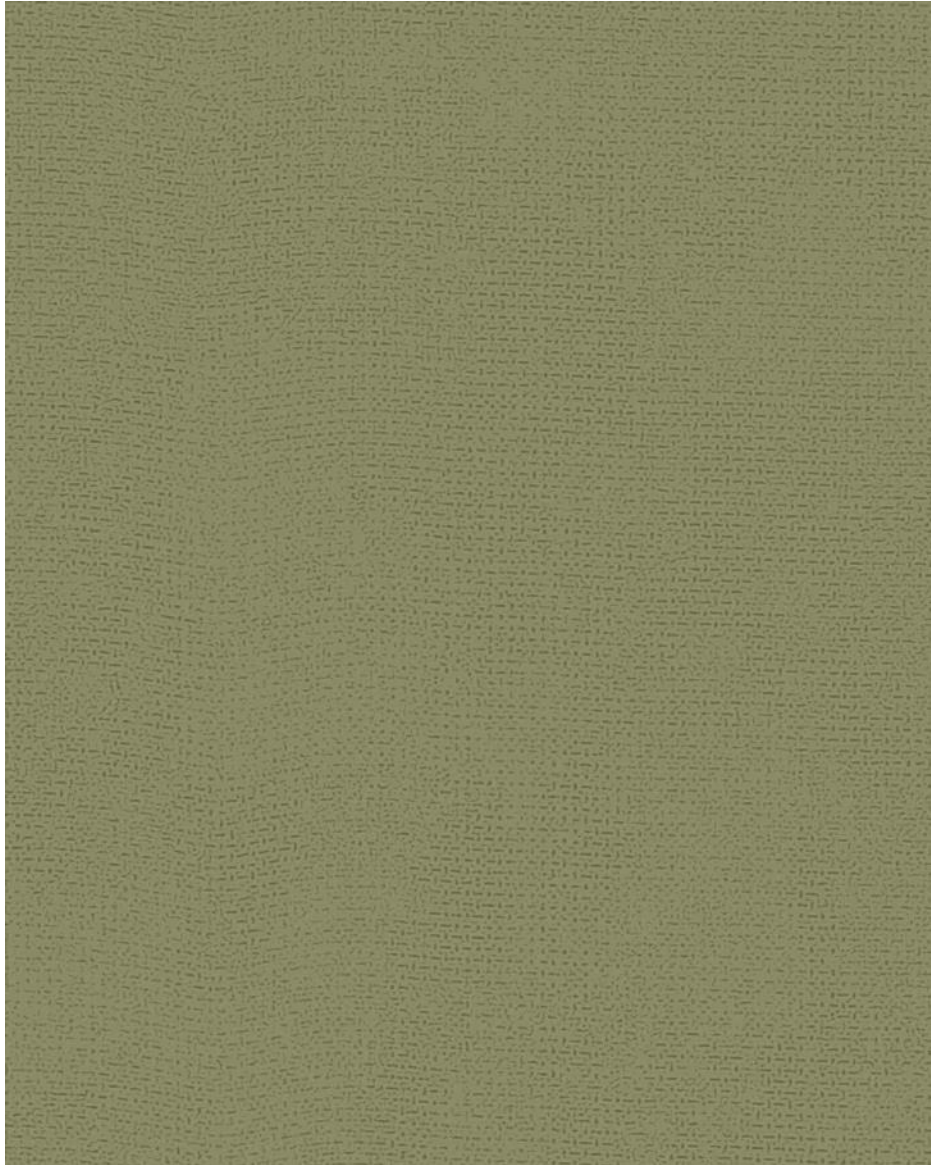
CHAPT 1:NATURE SONG



NATURE SONG



ATHENA



CSS004198

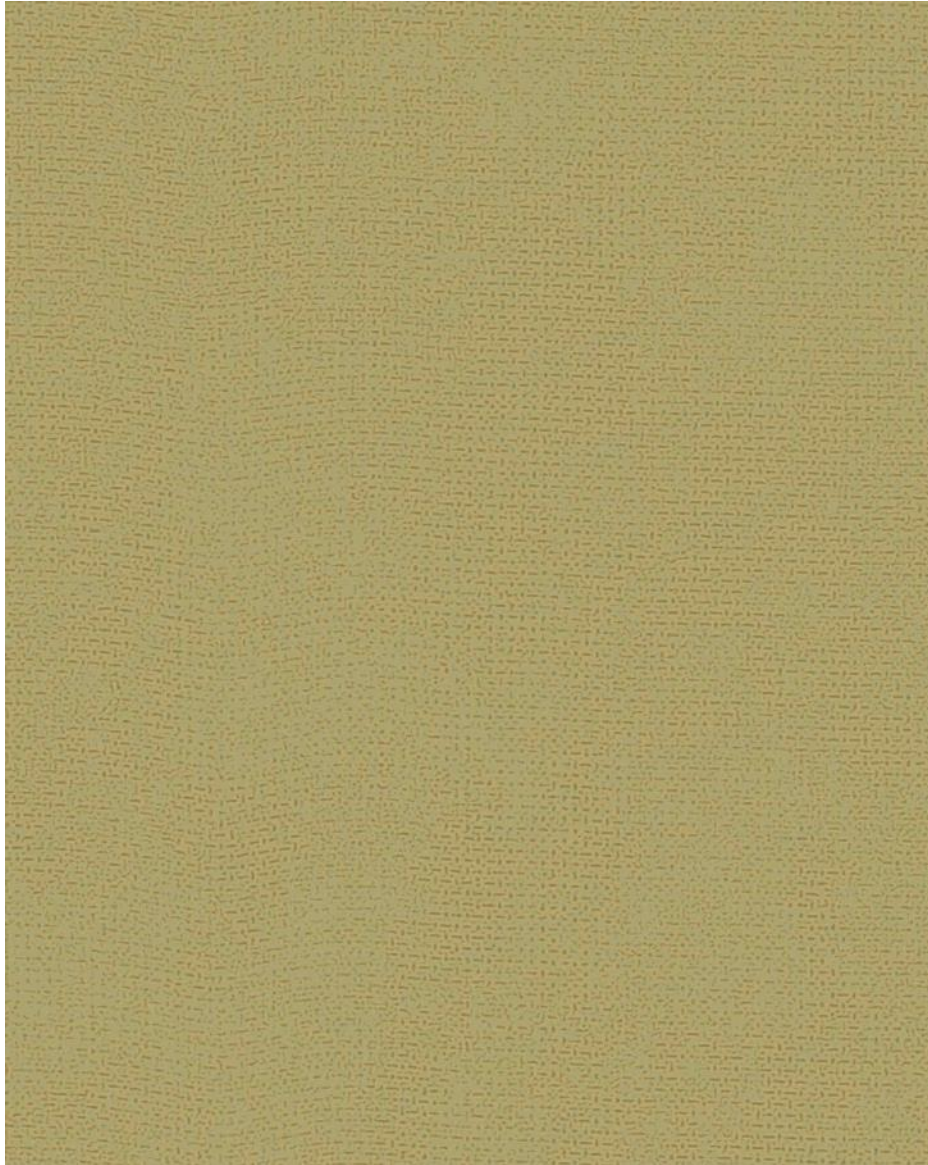
ETAMINE



CSS004207

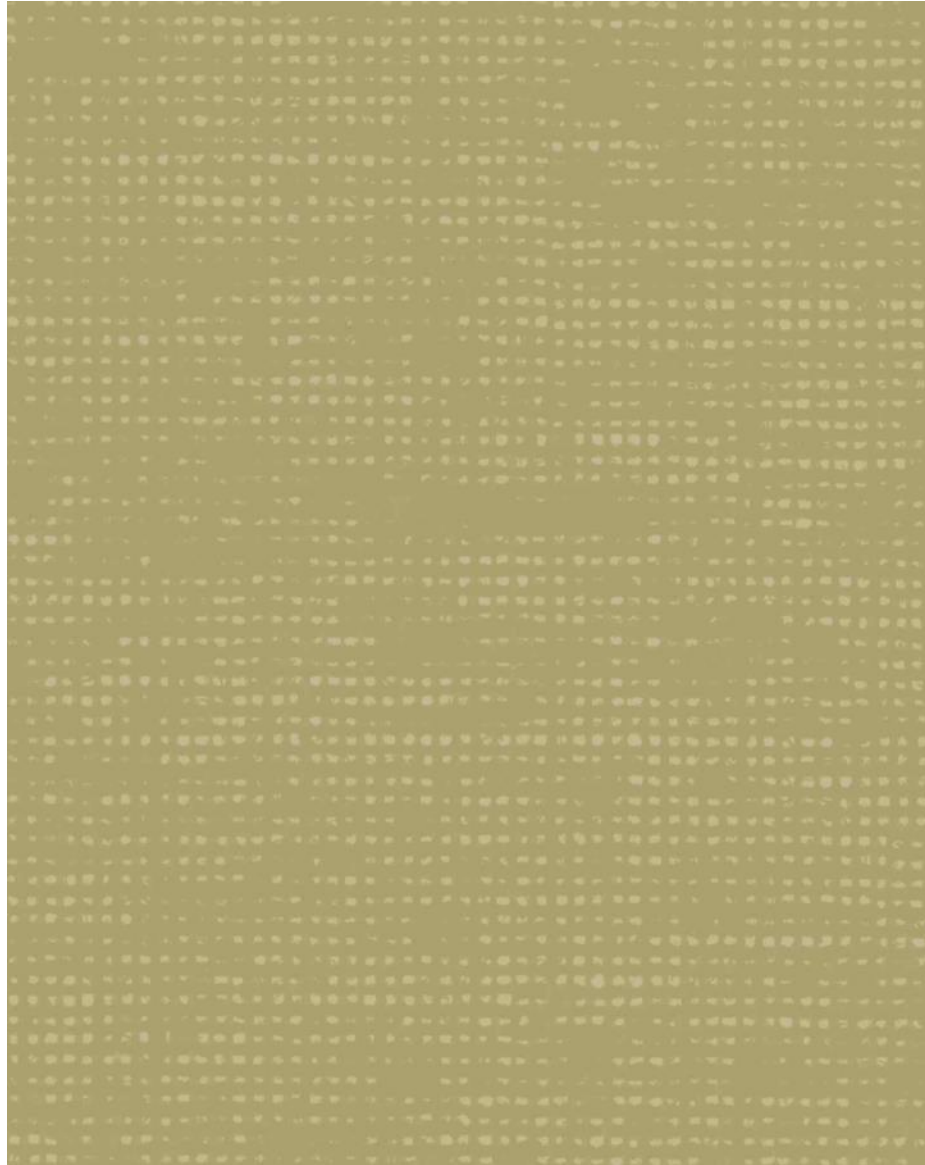


ATHENA



CSS004199

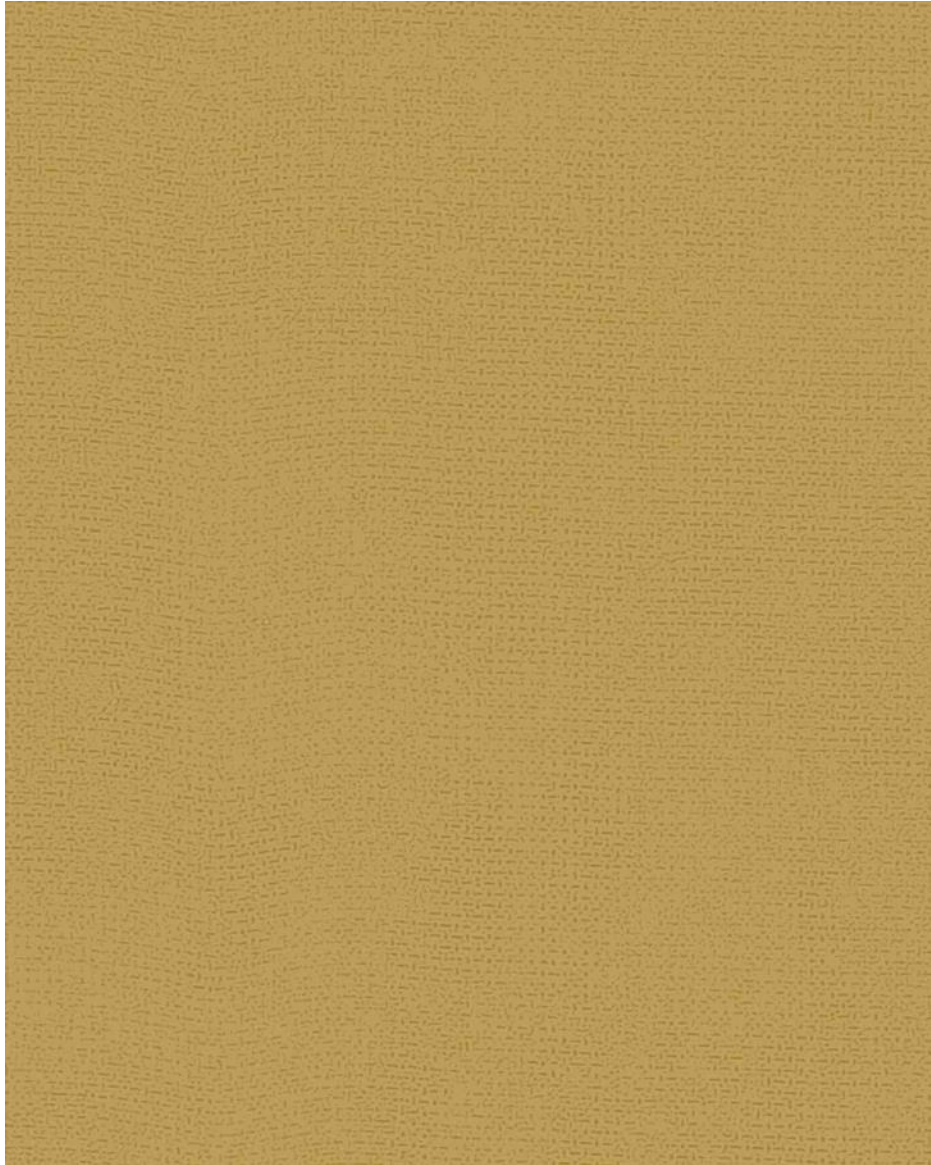
ETAMINE



CSS004208



ATHENA



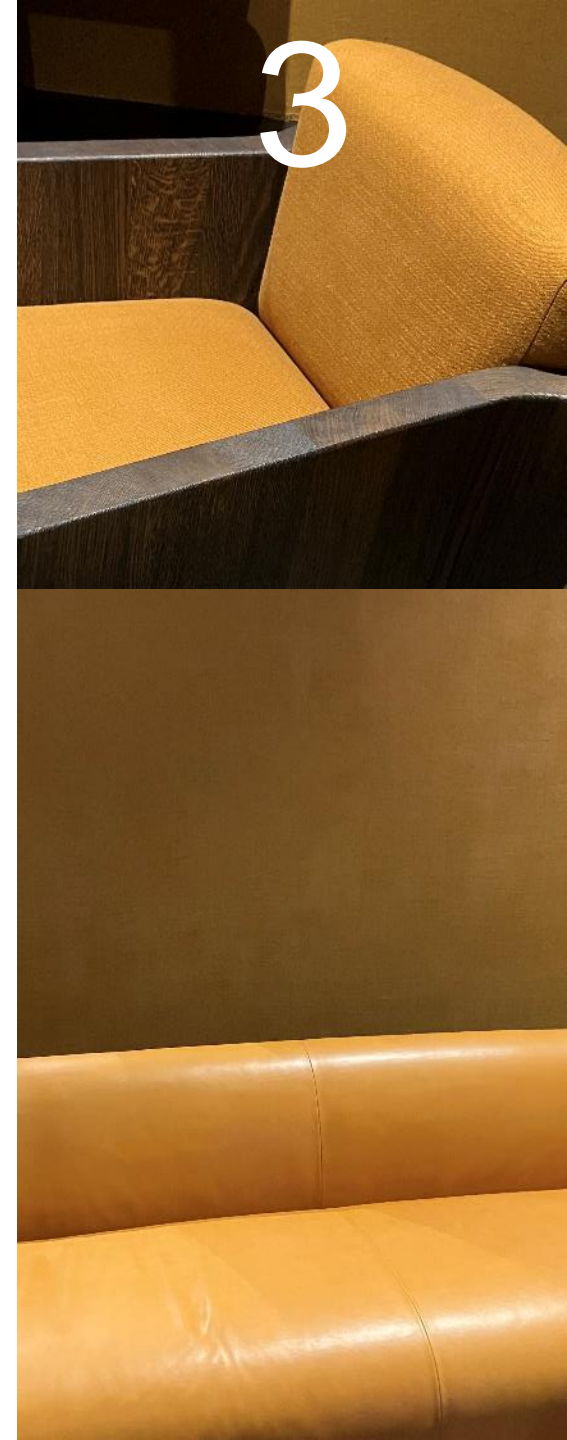
CSS004200

ETAMINE

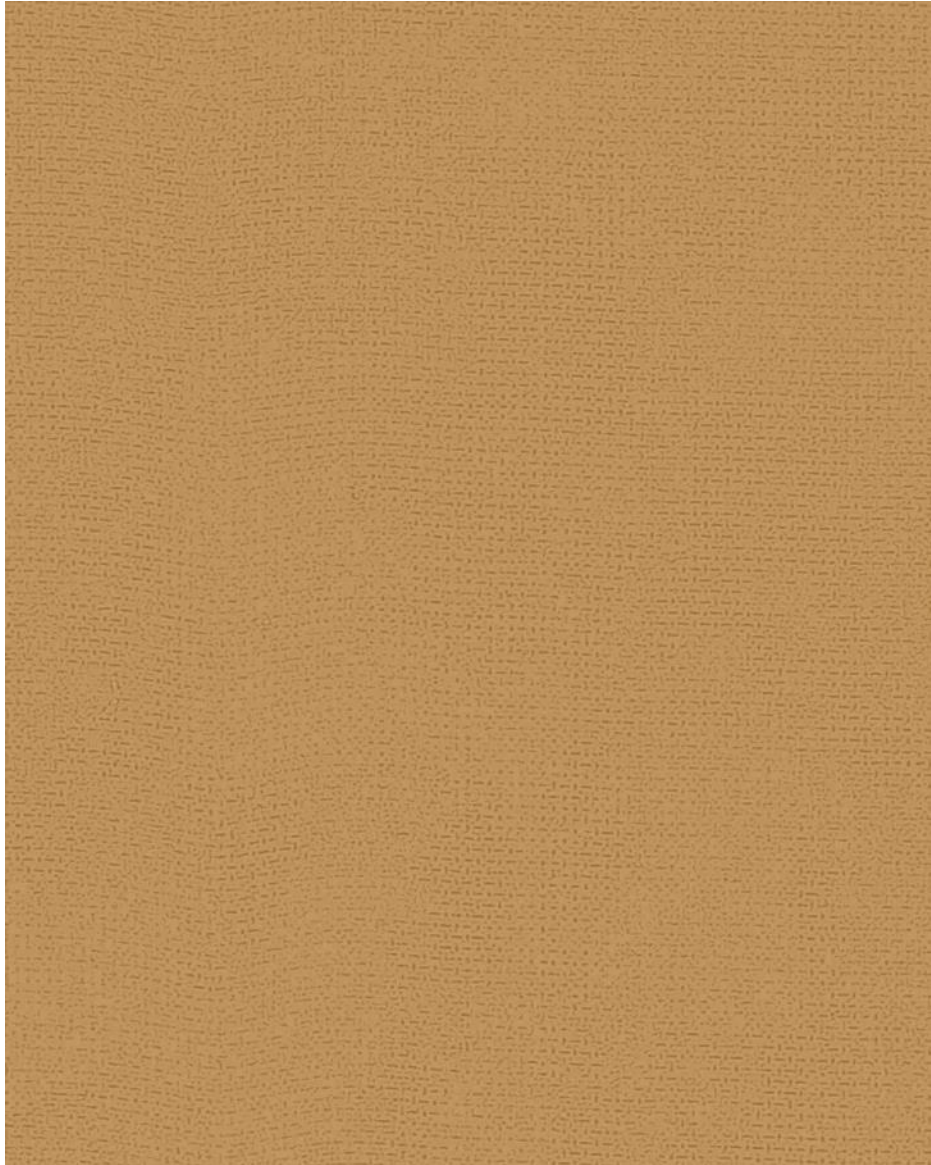


CSS004209

3

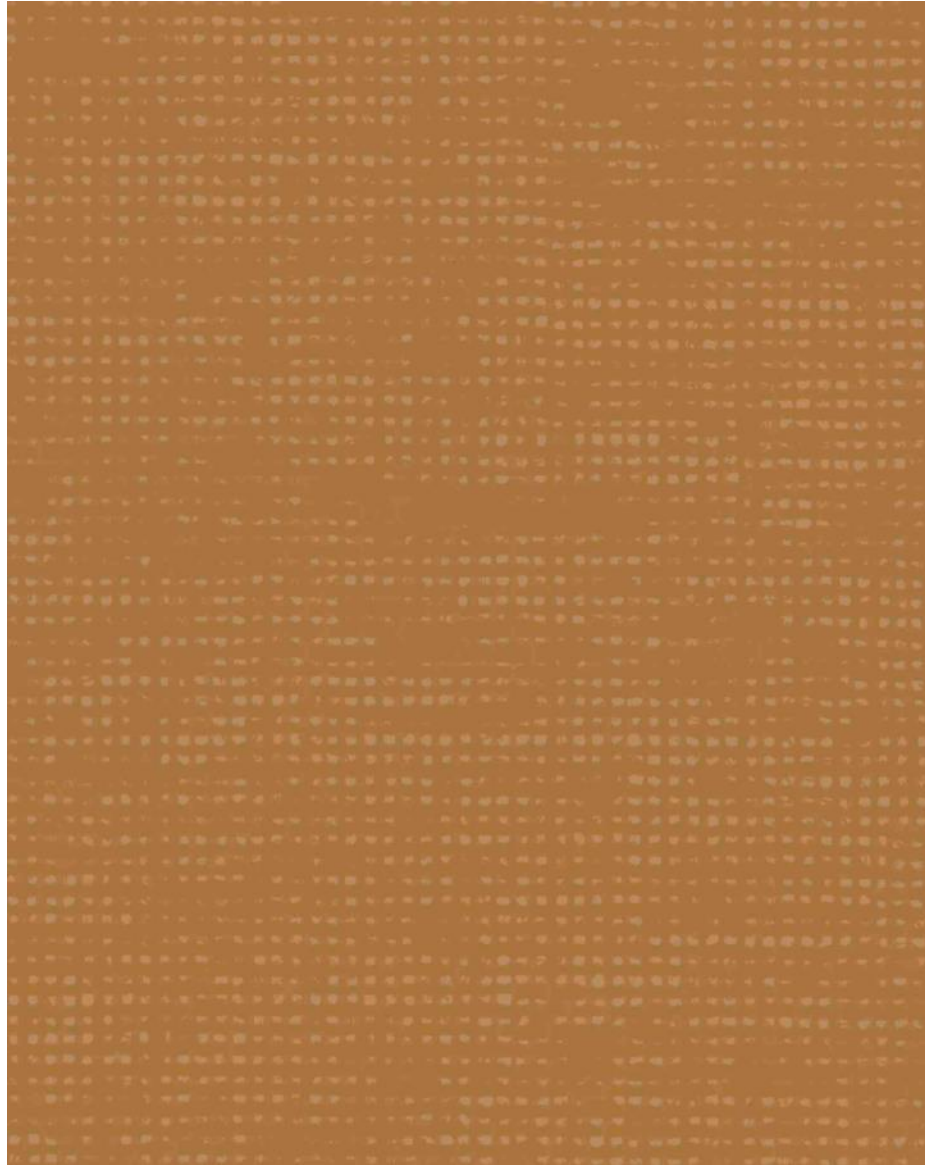


ATHENA



CSS004201

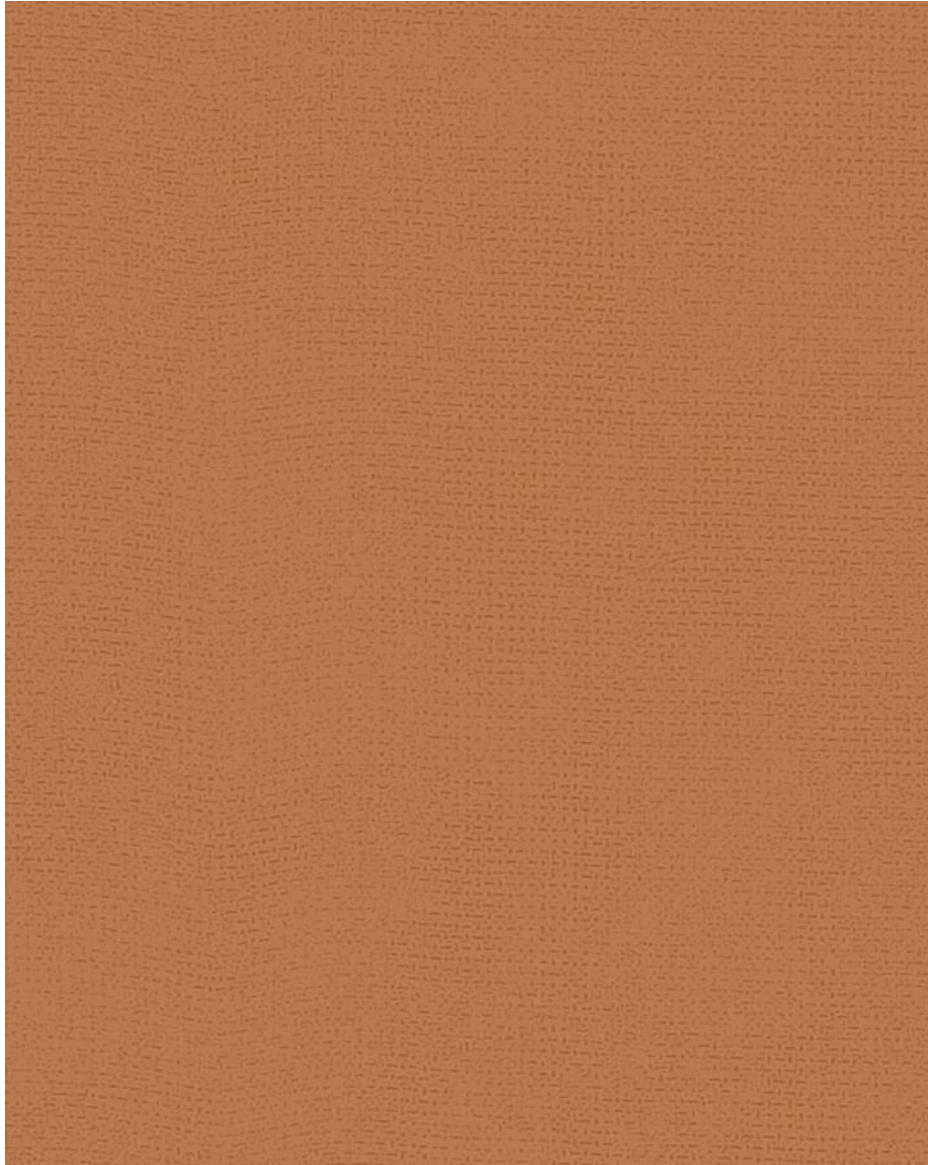
ETAMINE



CSS004210

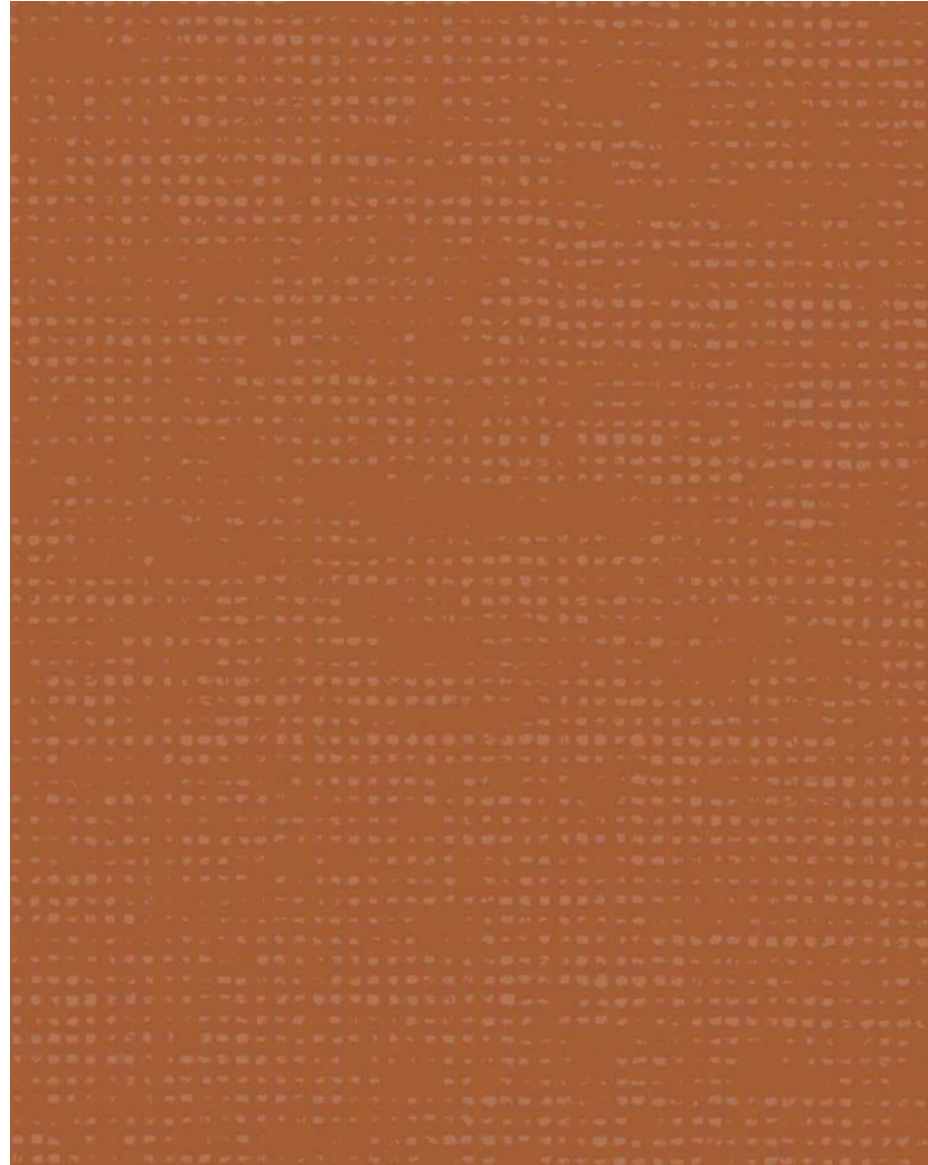


ATHENA



CSS004202

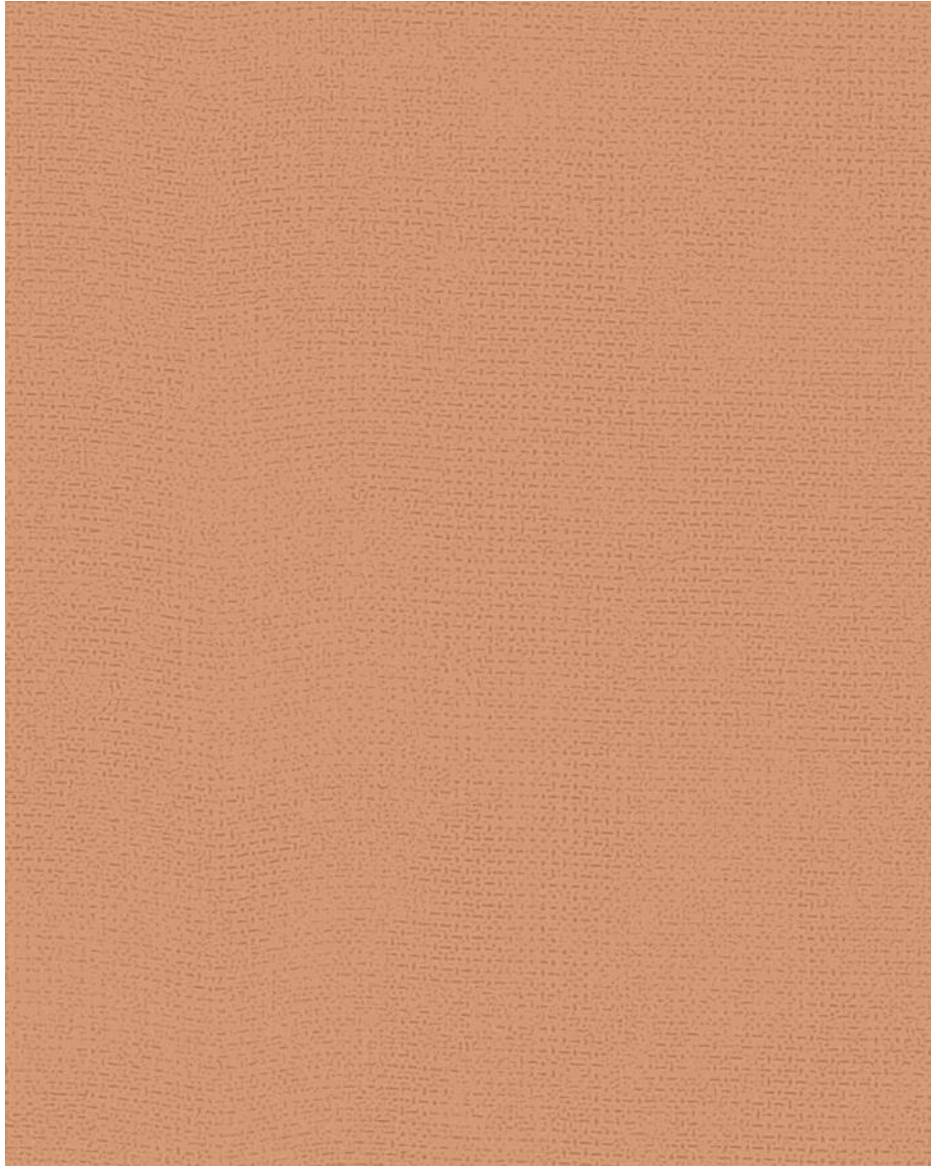
ETAMINE



CSS004211

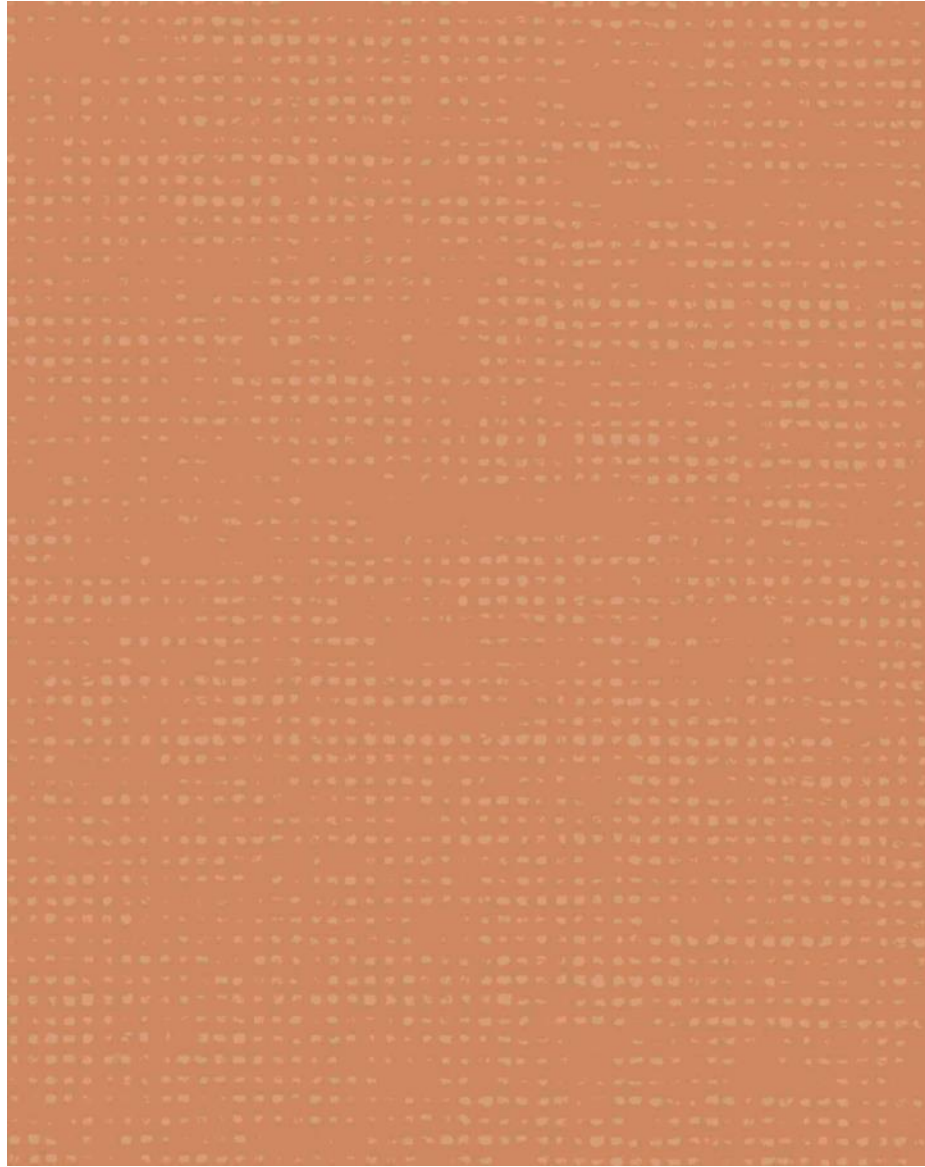


ATHENA



CSS004203

ETAMINE

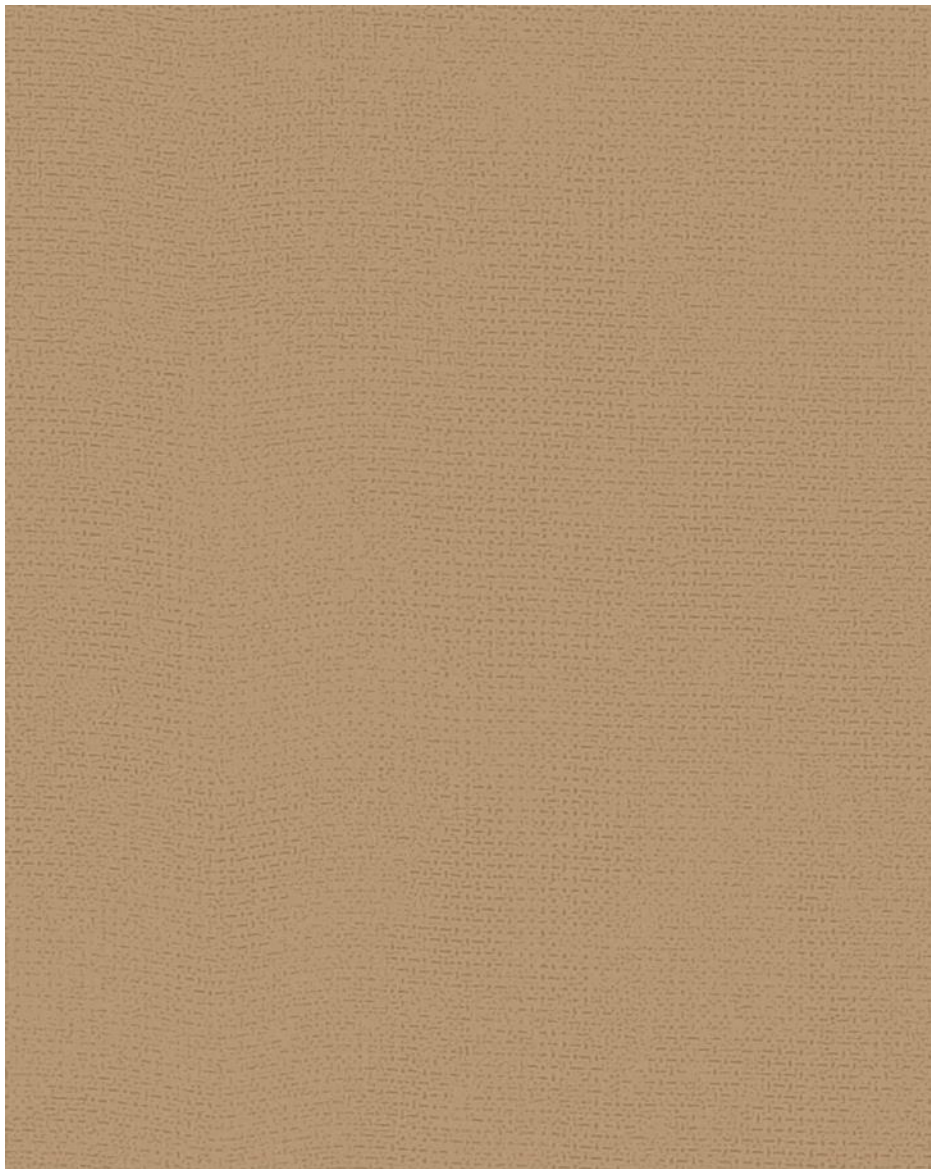


CSS004212

6

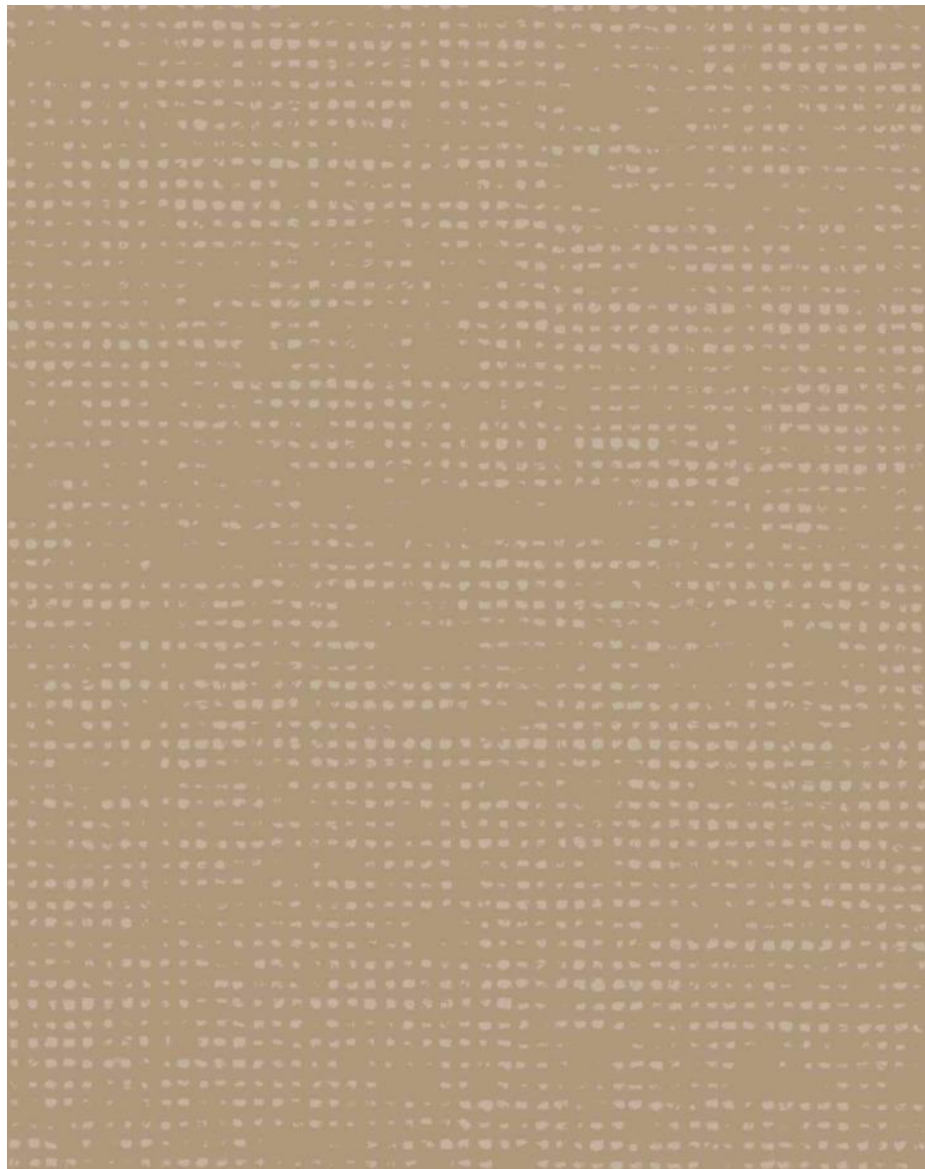


ATHENA



CSS004204

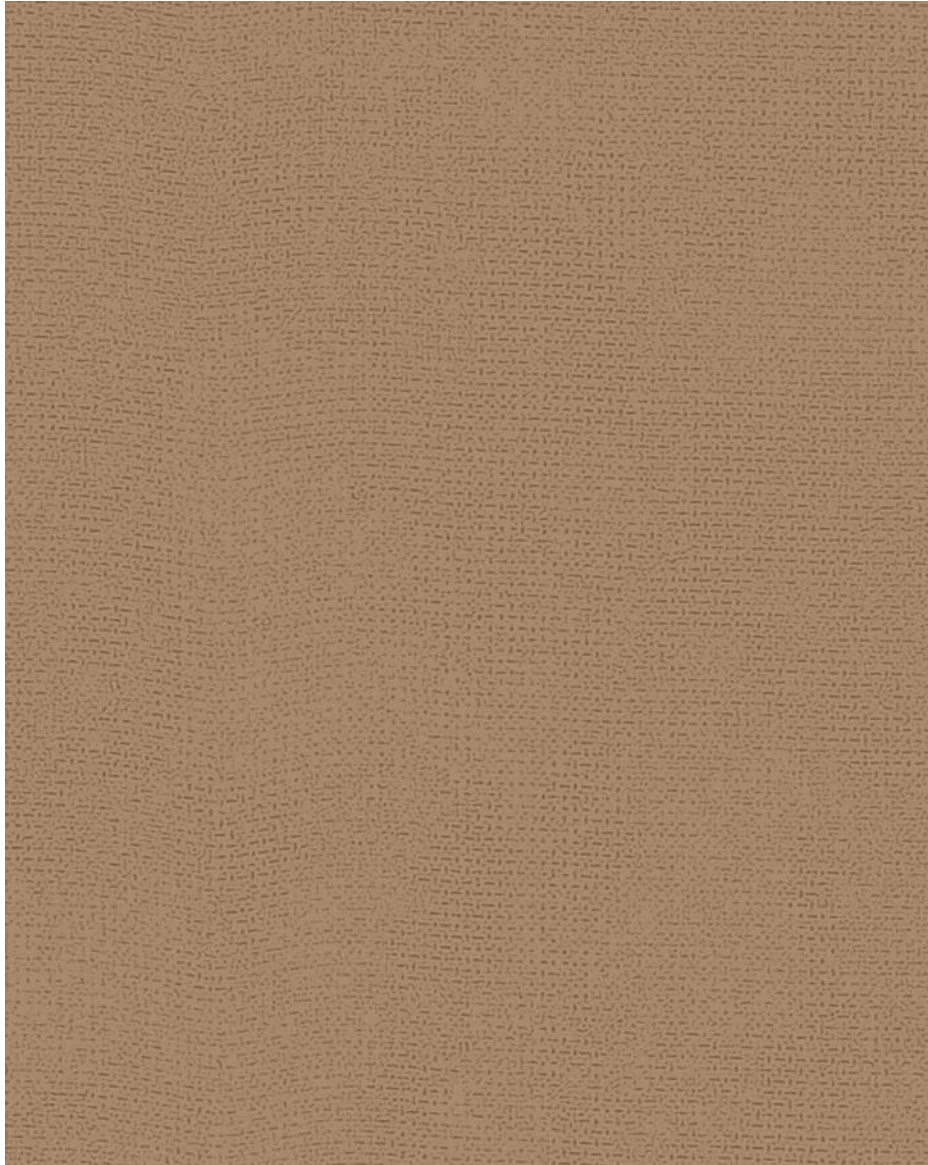
ETAMINE



CSS004213

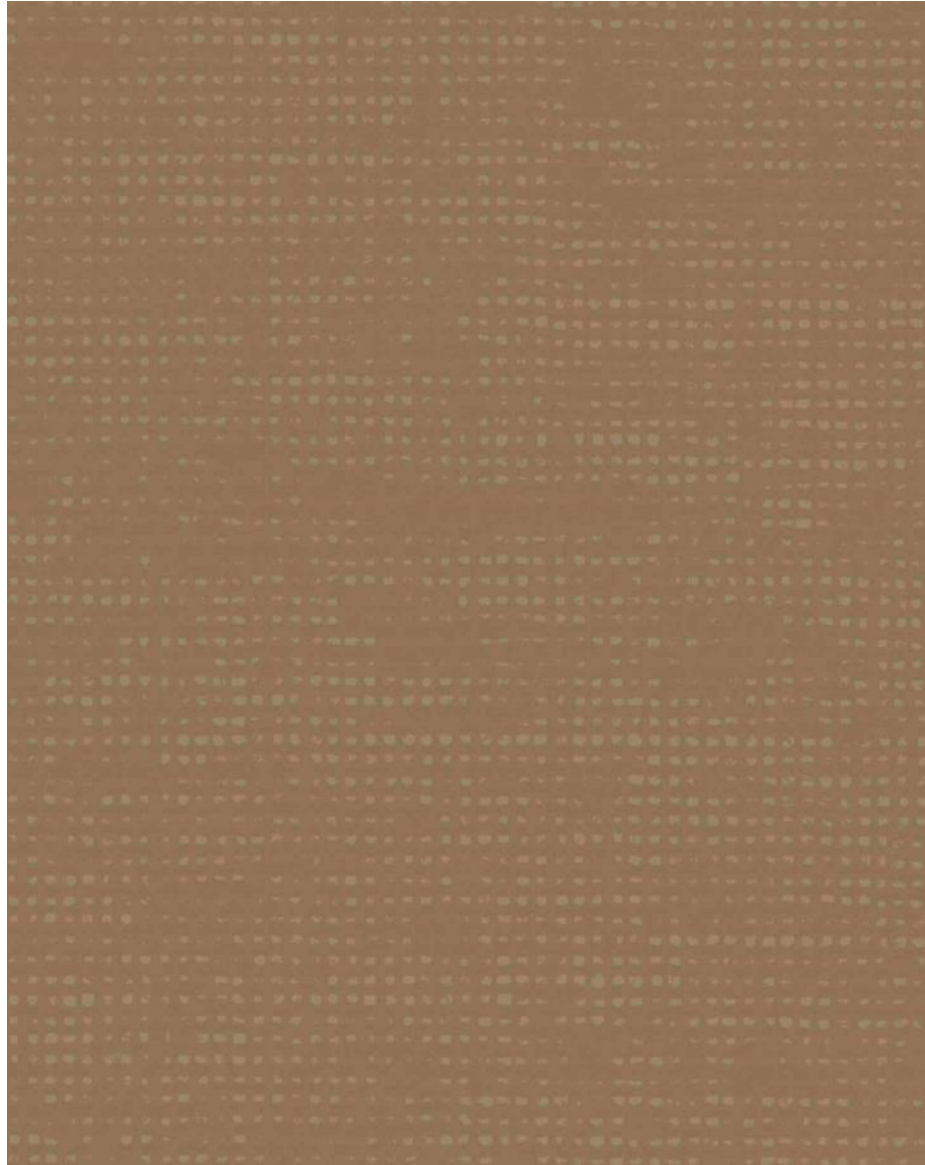


ATHENA

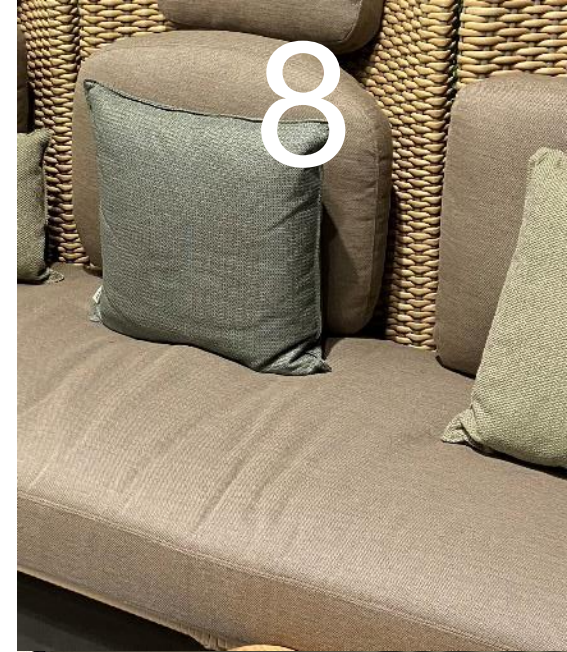


CSS004205

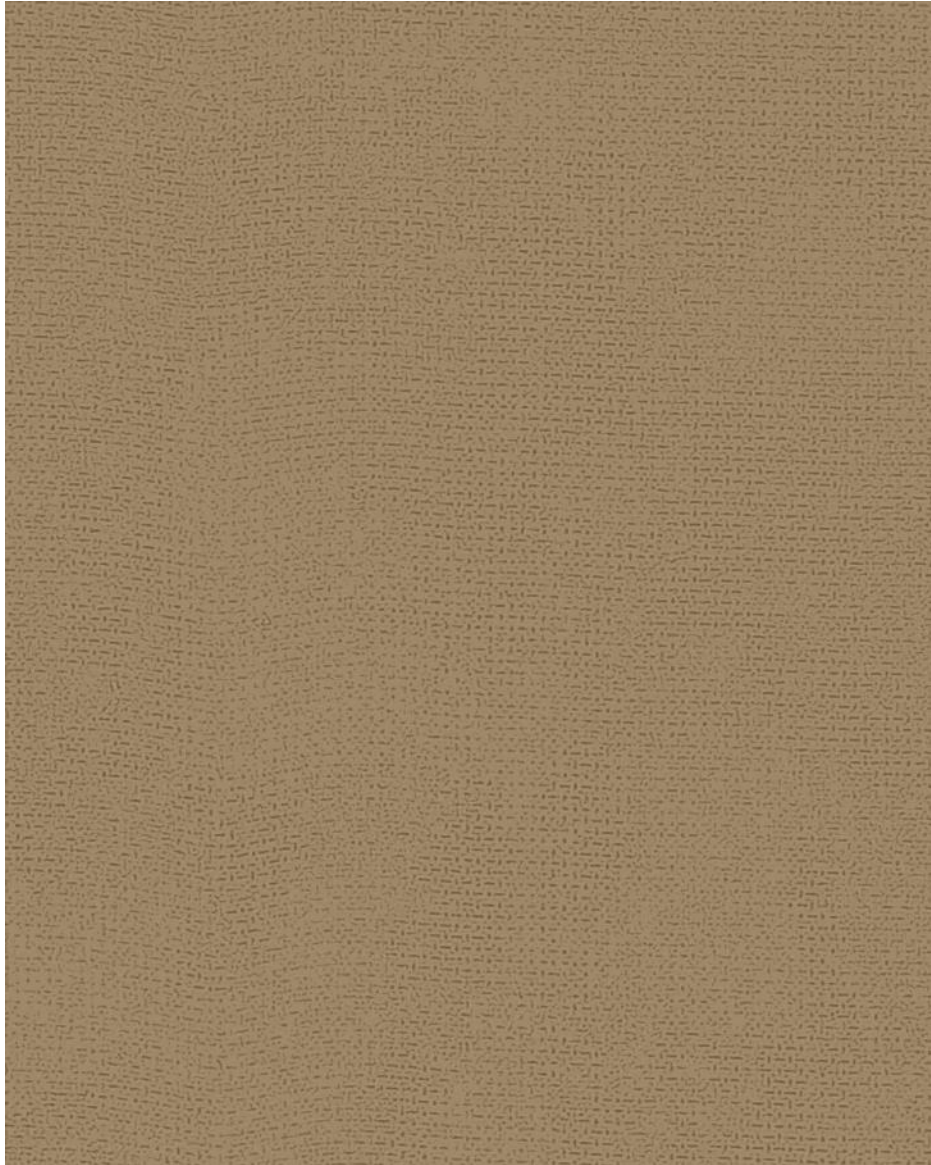
ETAMINE



CSS004214

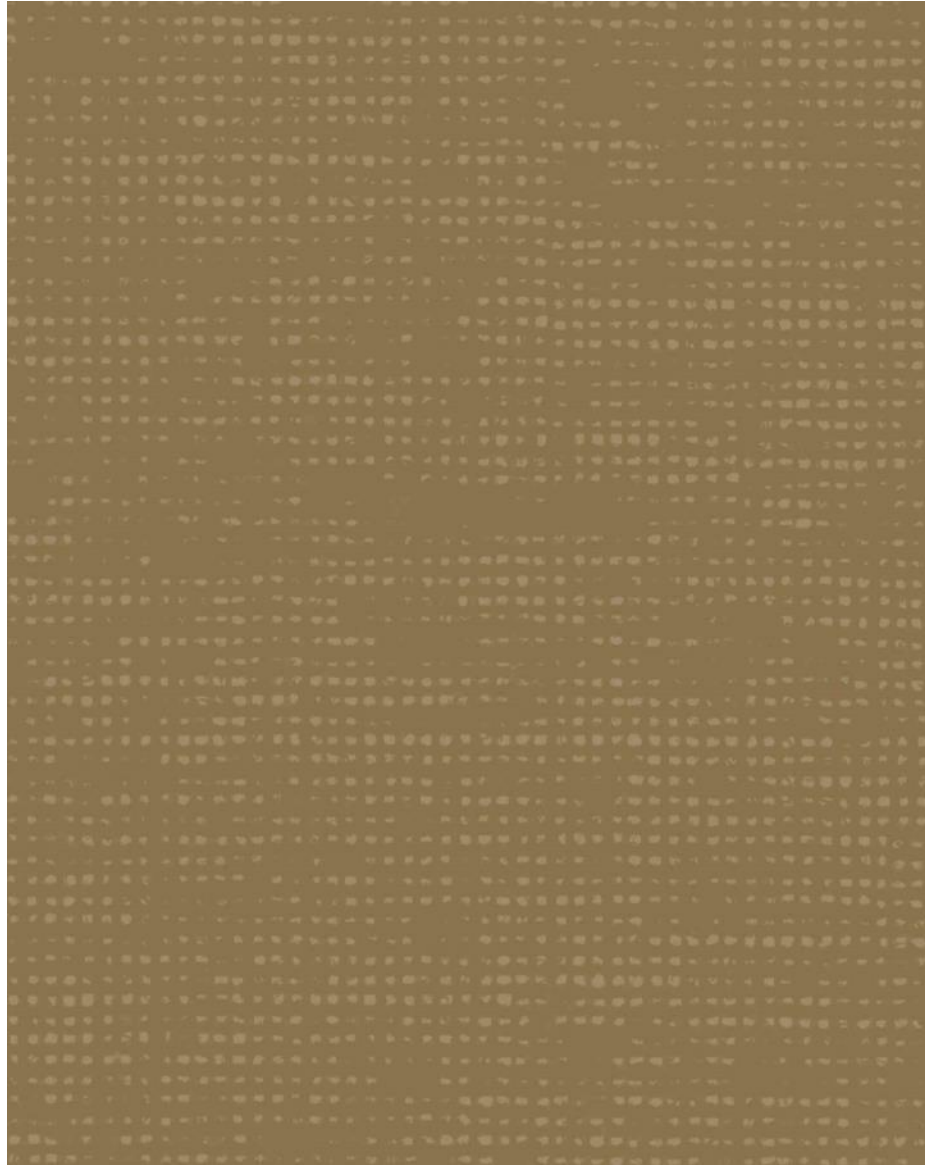


ATHENA



CSS004197

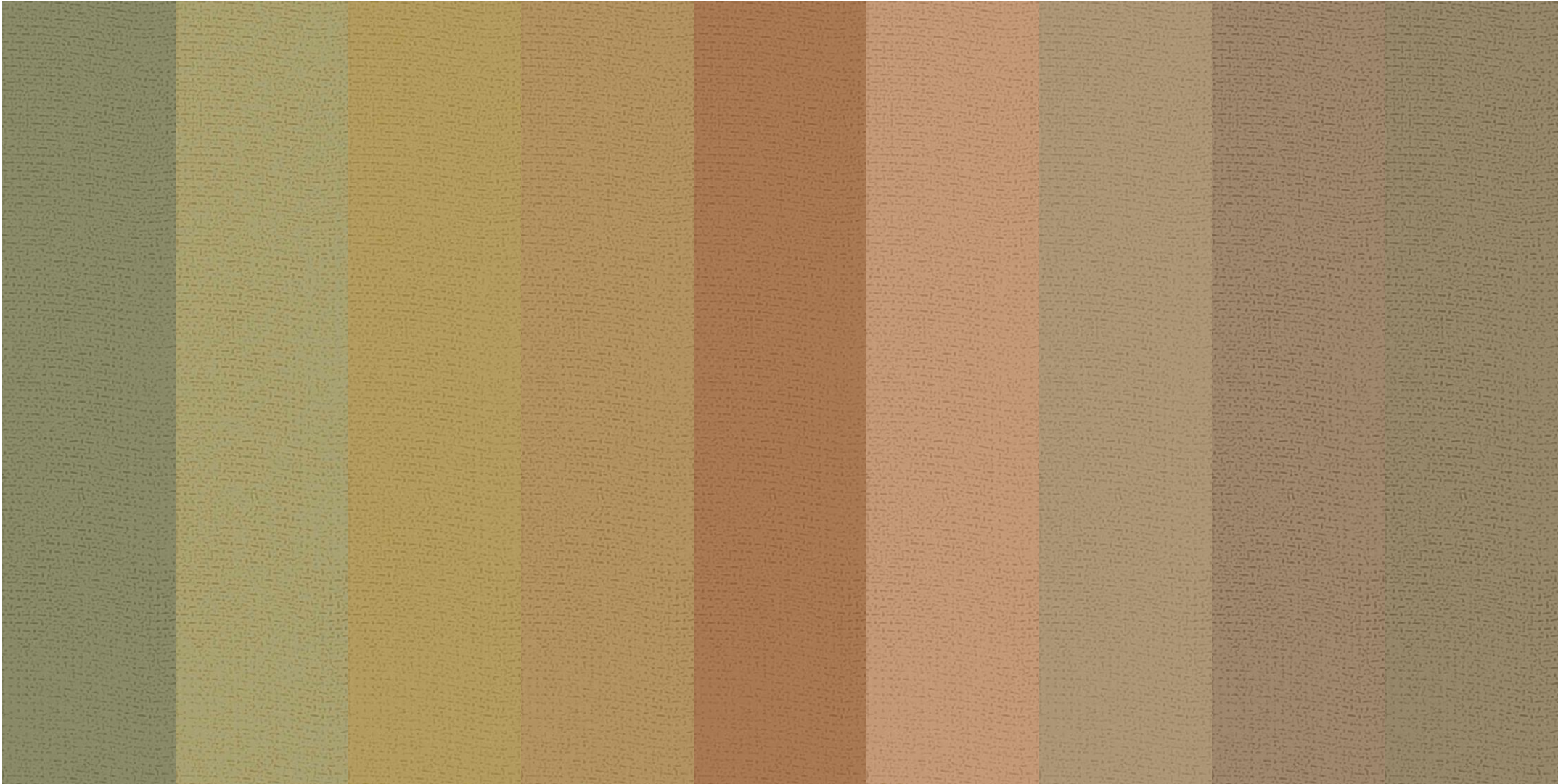
ETAMINE



CSS004206



NATURE SONG : ATHENA



NATURE SONG : ETAMINE





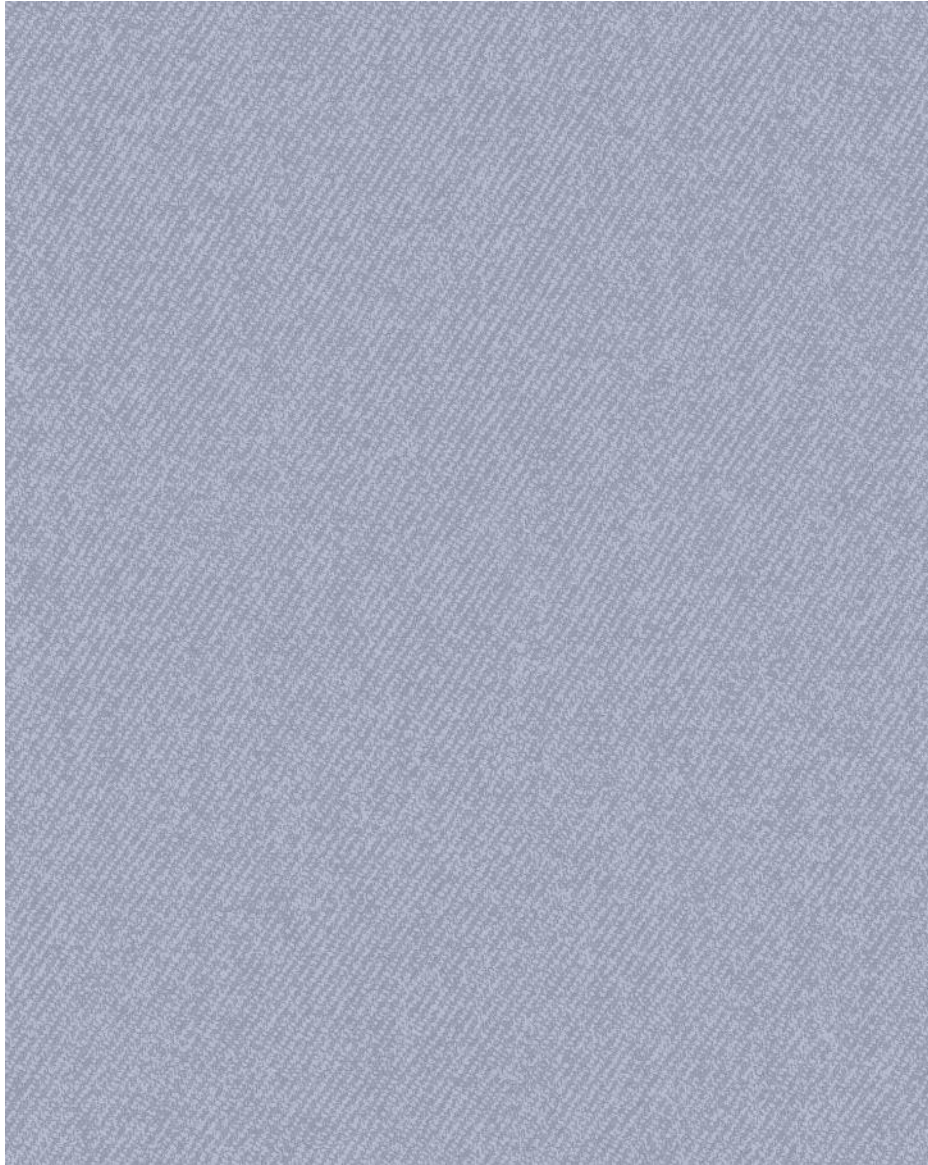
CHAPT 2:CHIC MINIMAL



CHAPT 2: CHIC MINIMAL

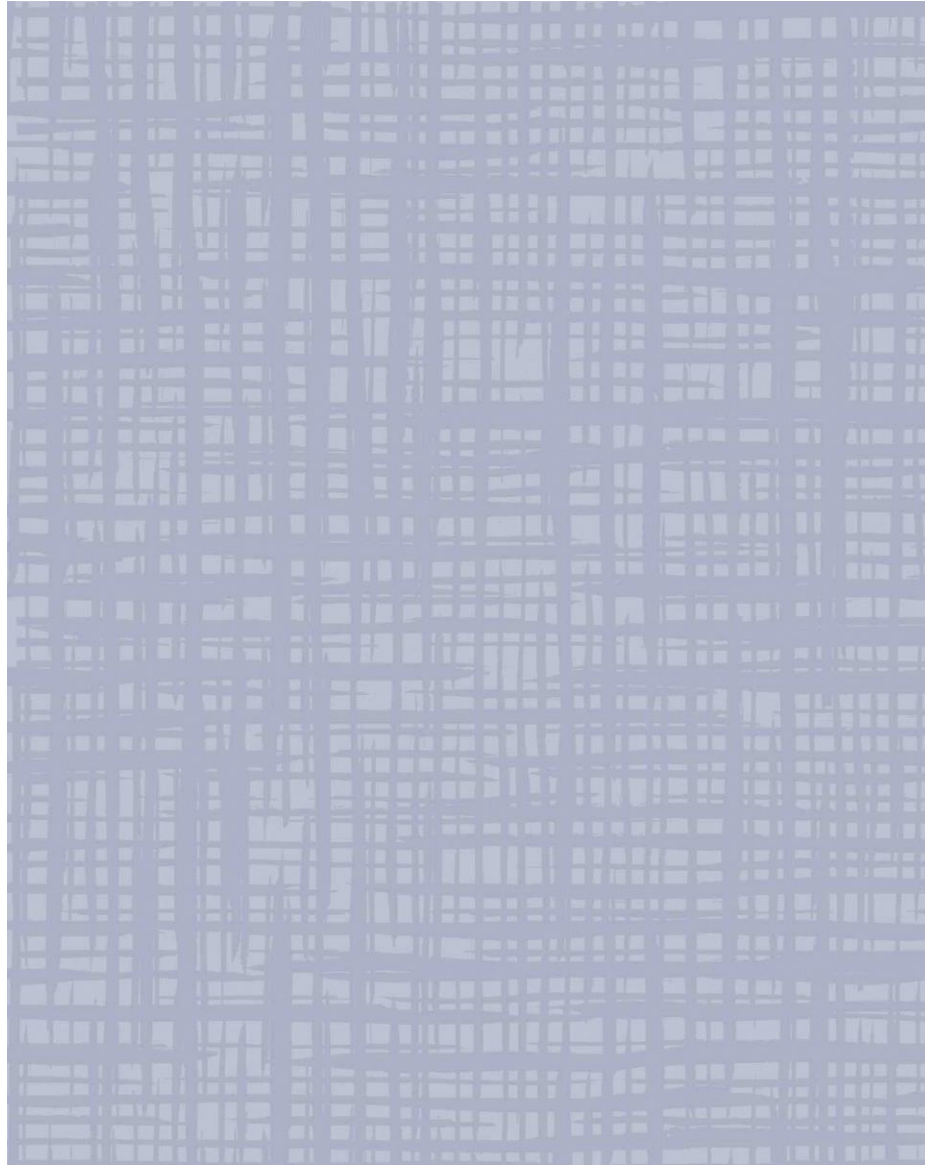


JEANS



CSS004215

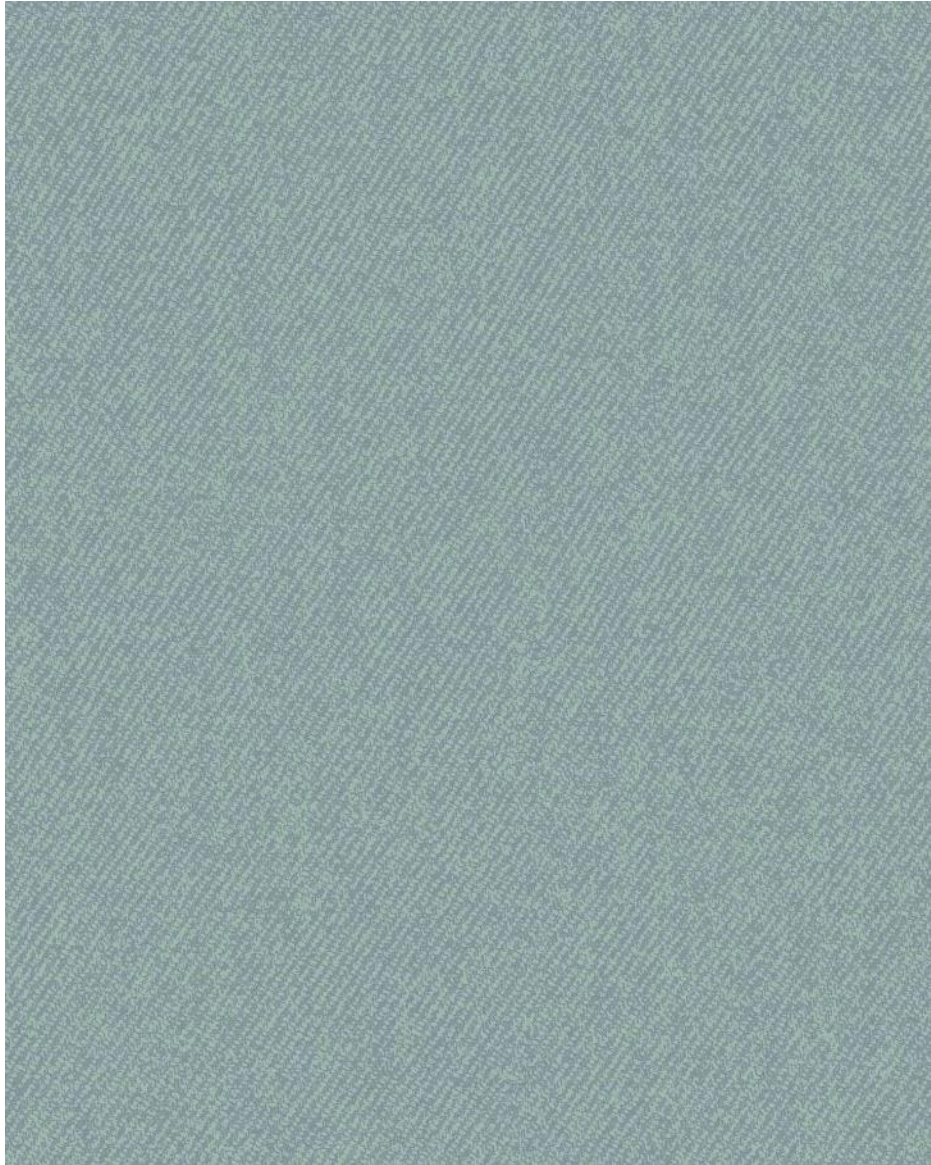
GLASGOW



CSS004224

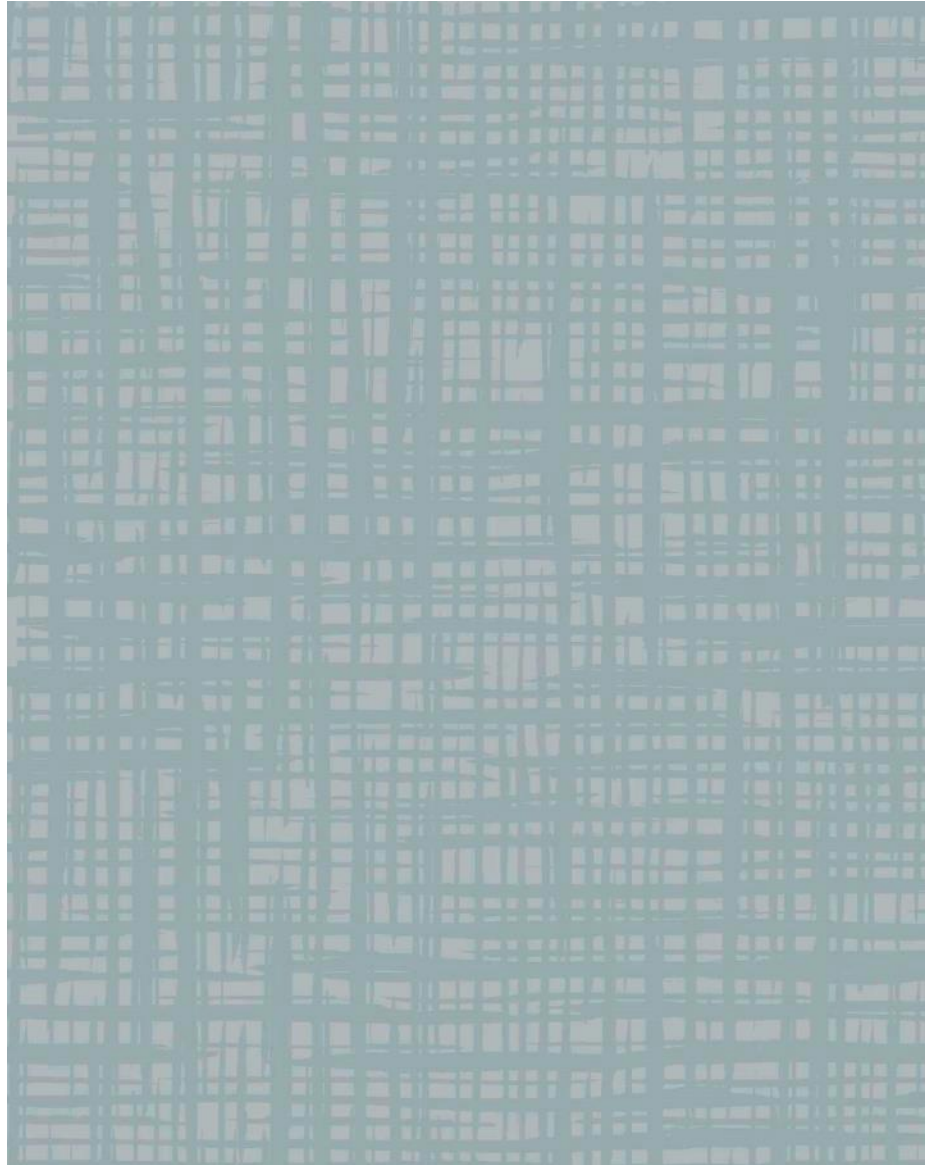


JEANS



CSS004216

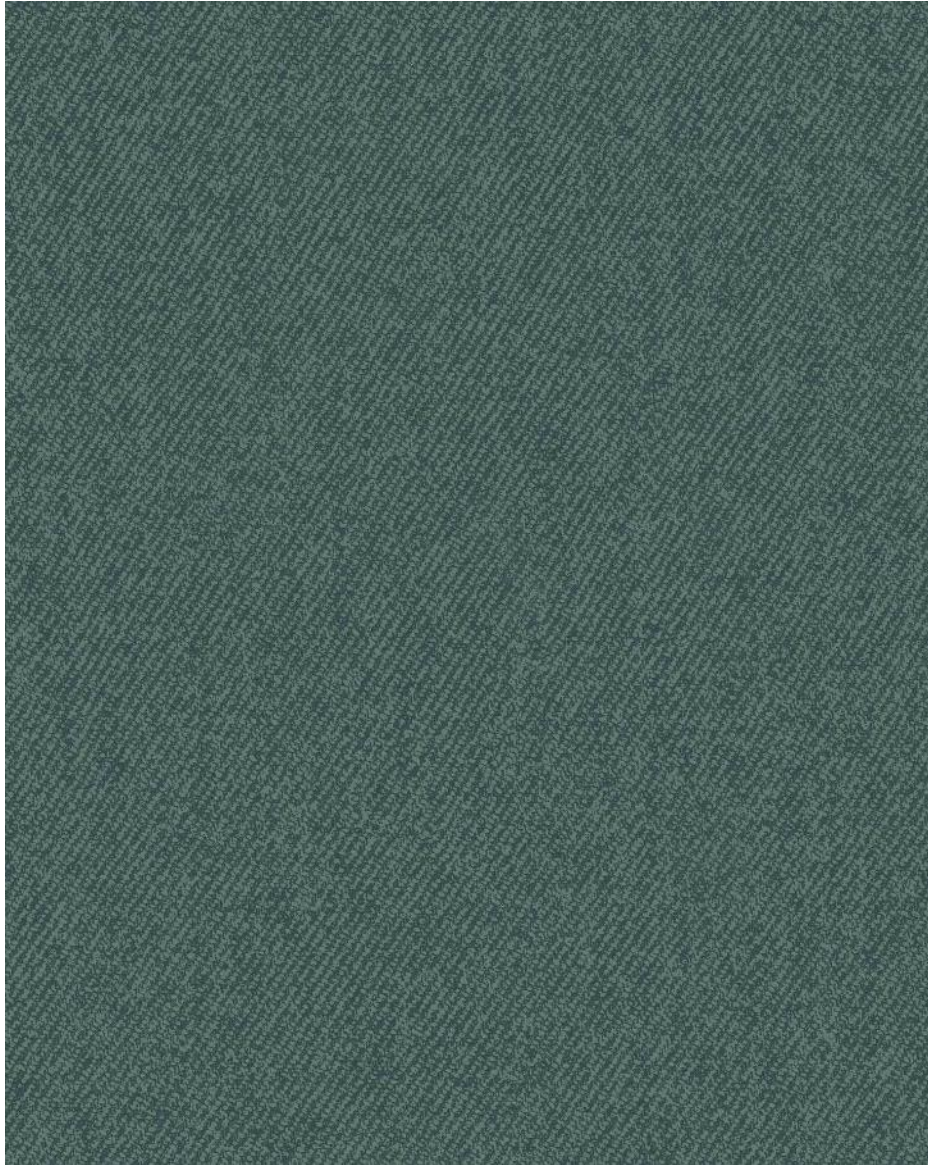
GLASGOW



CSS004225



JEANS



CSS004217

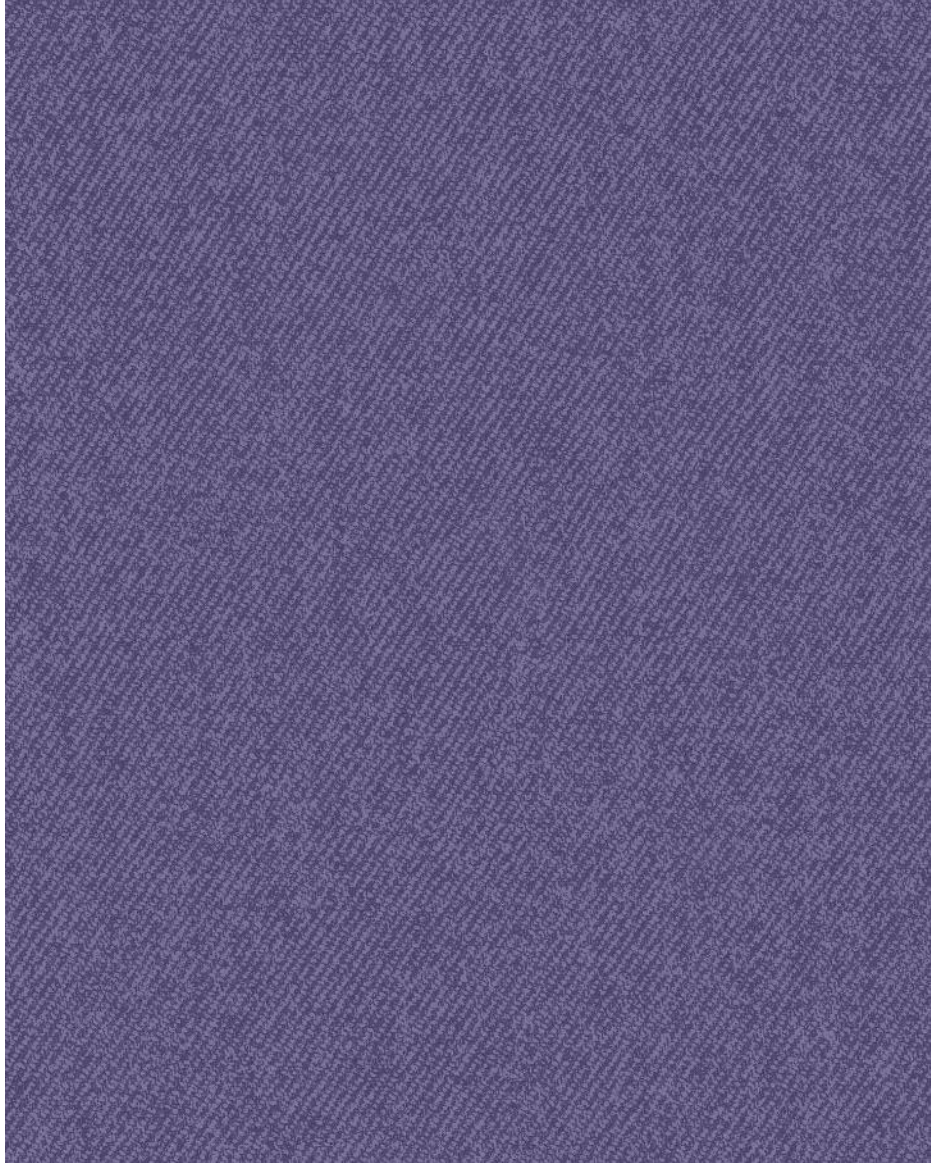
GLASGOW



CSS004226



JEANS



CSS004218

GLASGOW

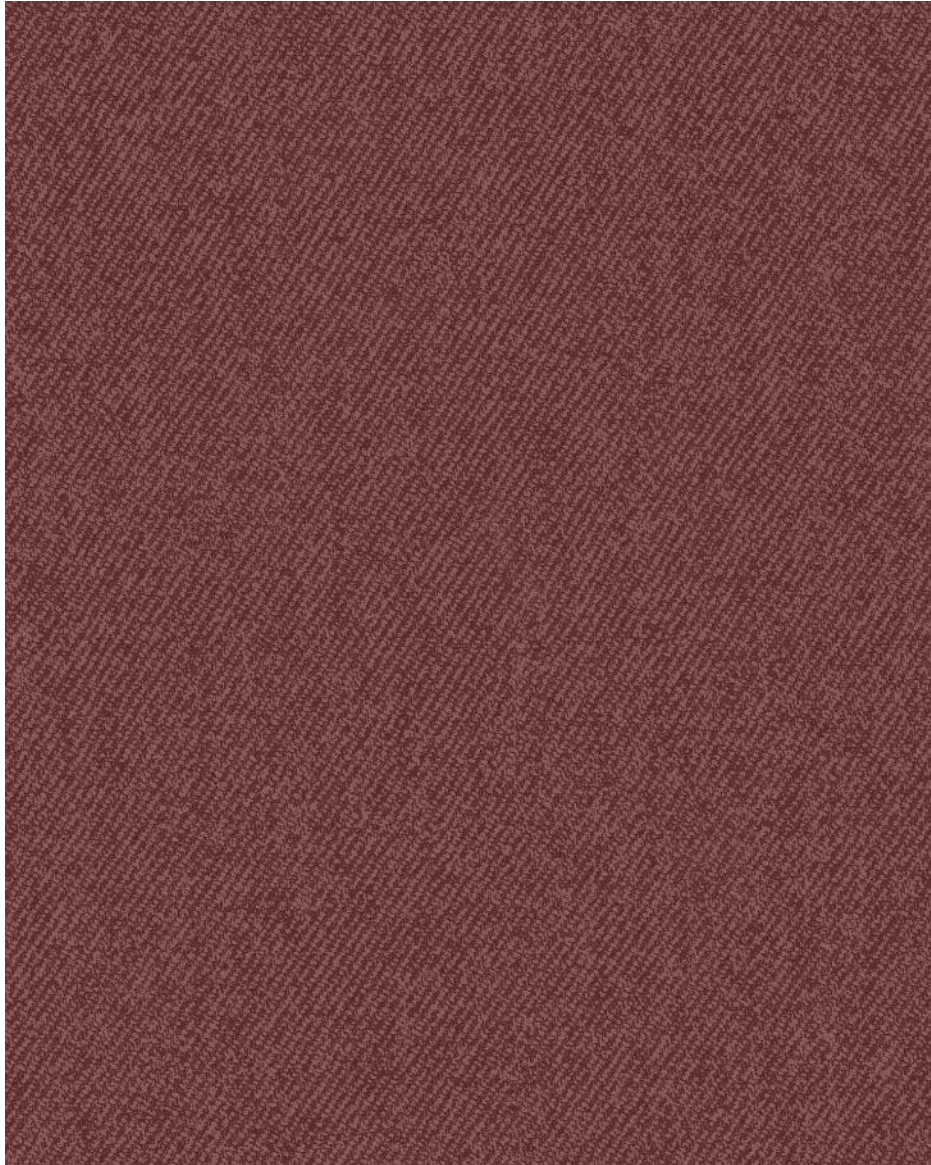


CSS004227

4



JEANS



CSS004219

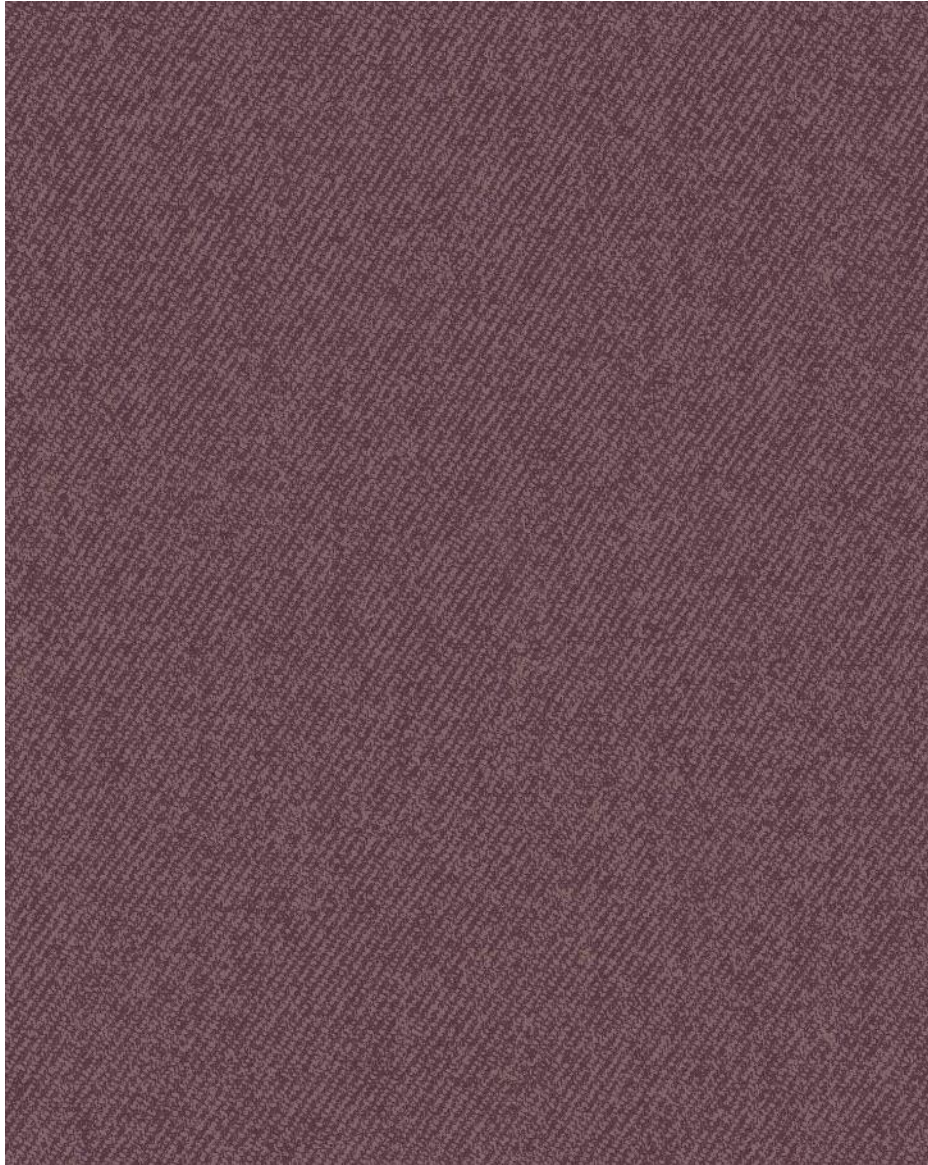
GLASGOW



CSS004228

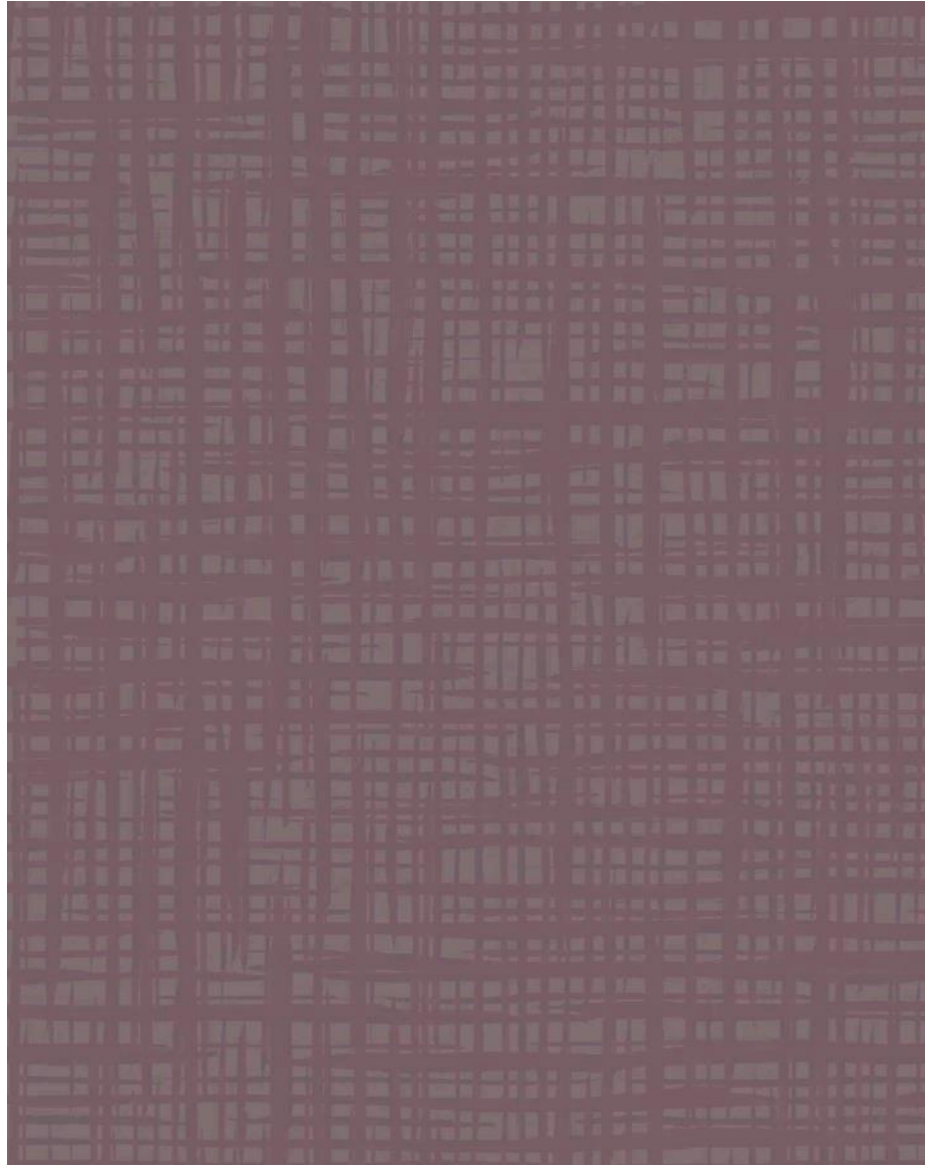


JEANS



CSS004220

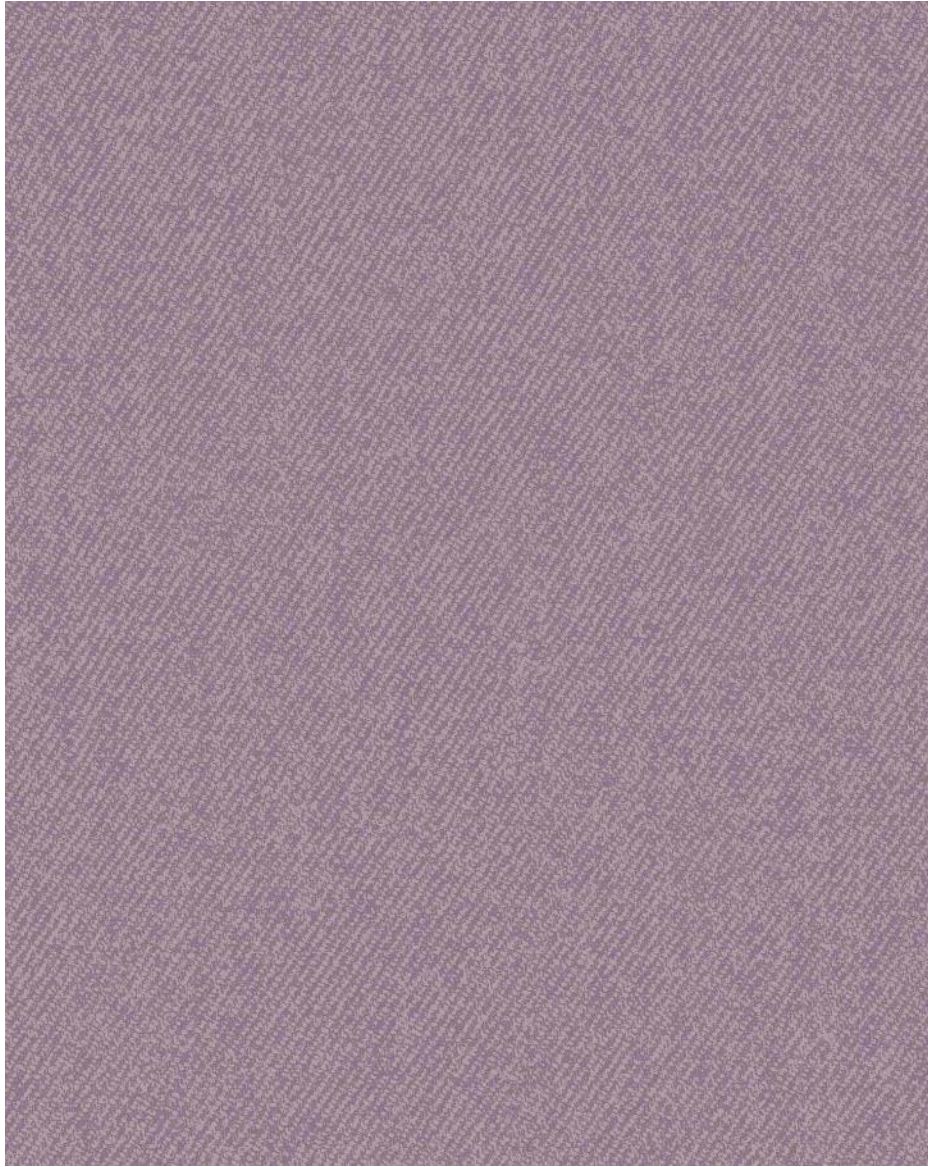
GLASGOW



CSS004229

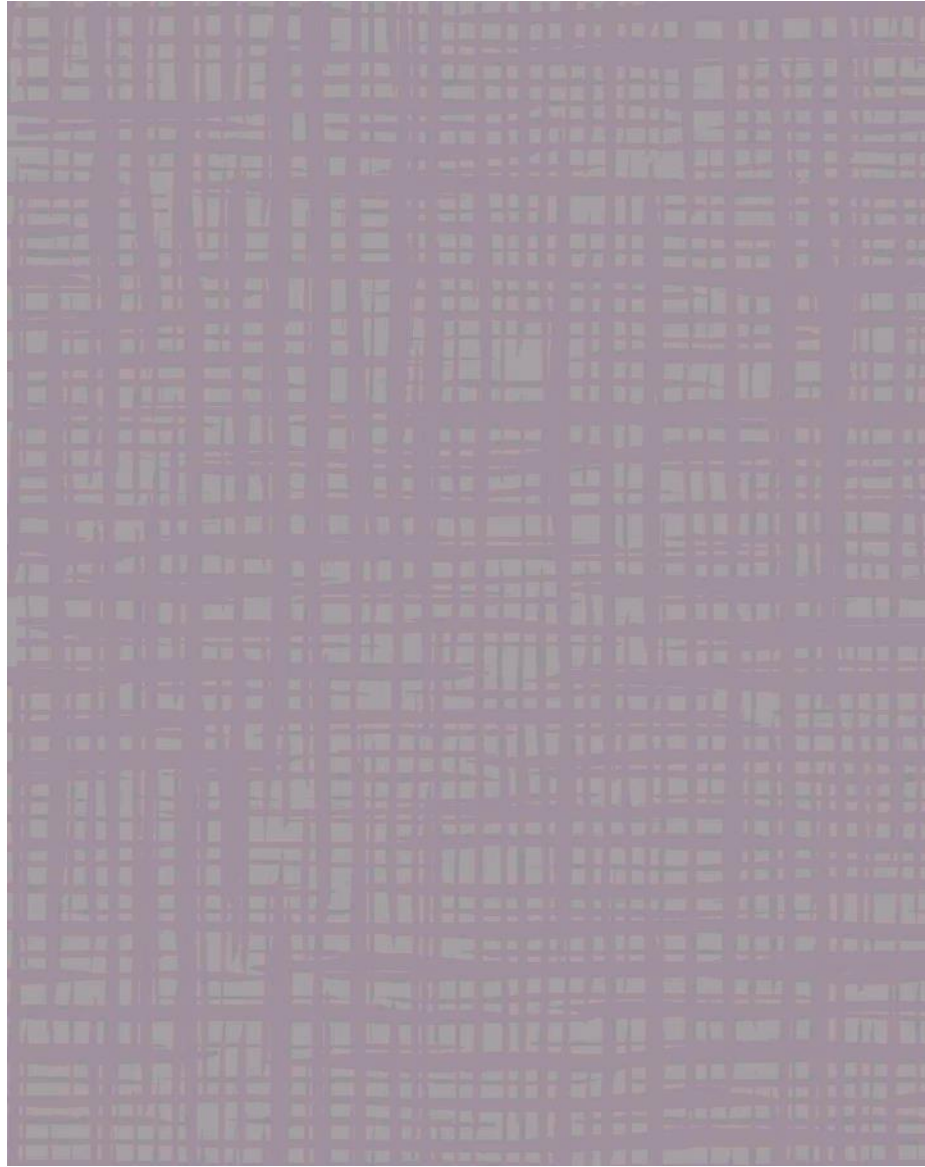


JEANS



CSS004221

GLASGOW

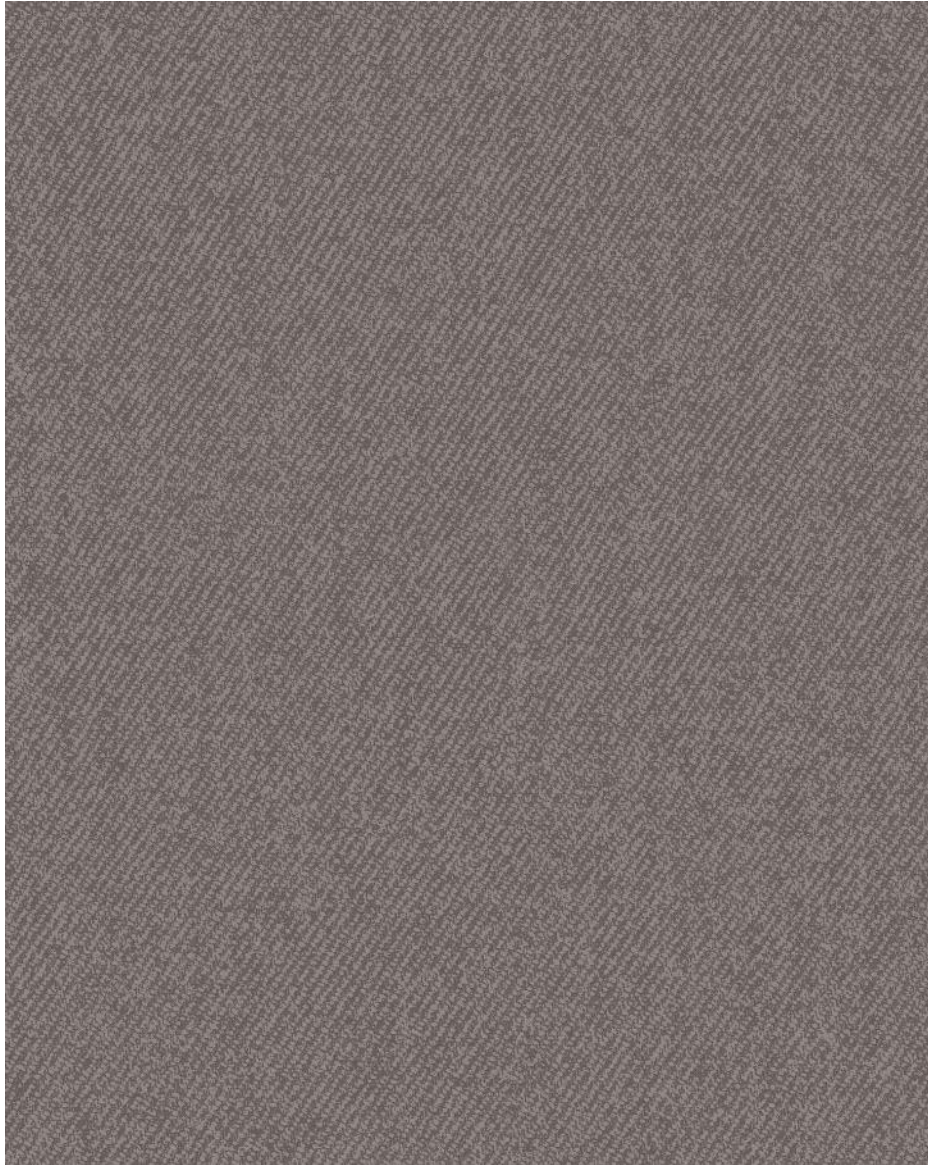


CSS004230



7

JEANS



CSS004222

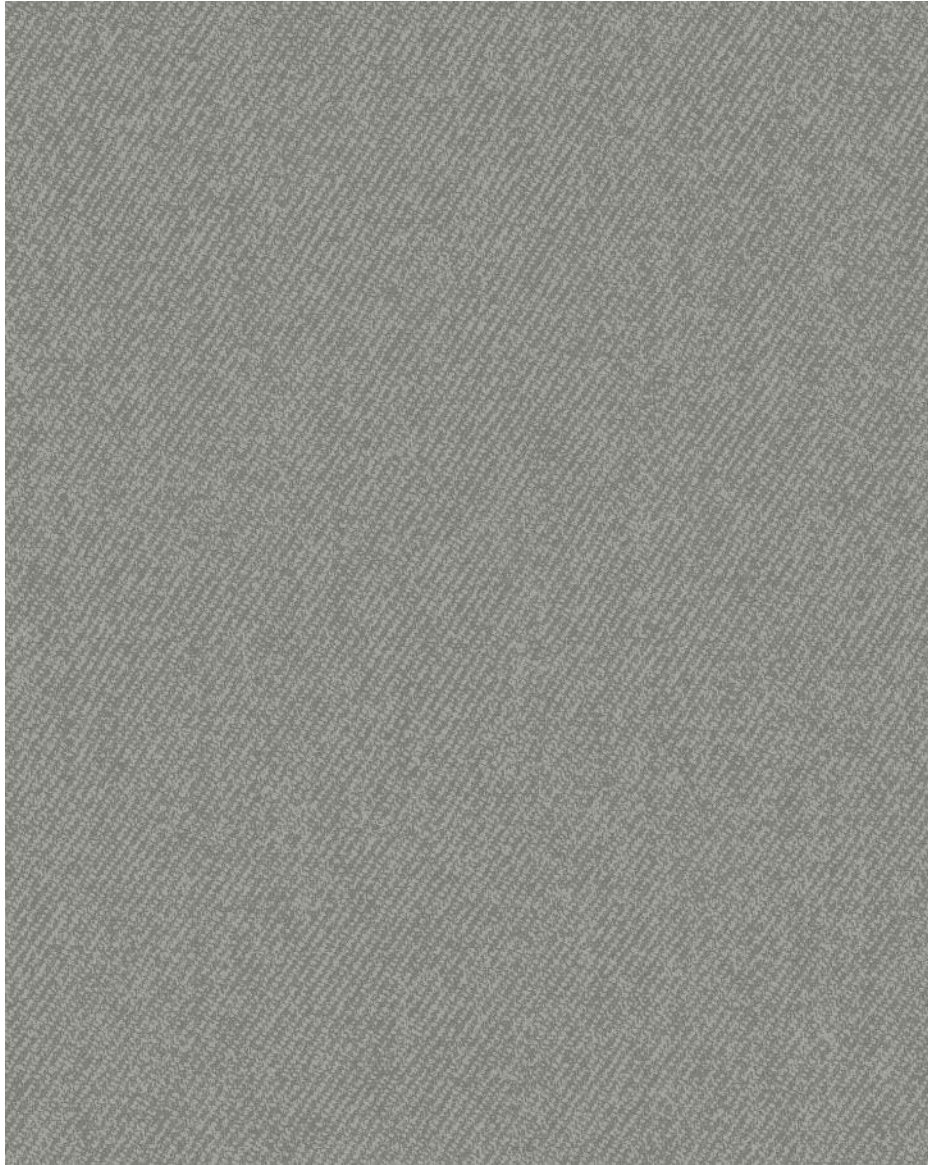
GLASGOW



CSS004231

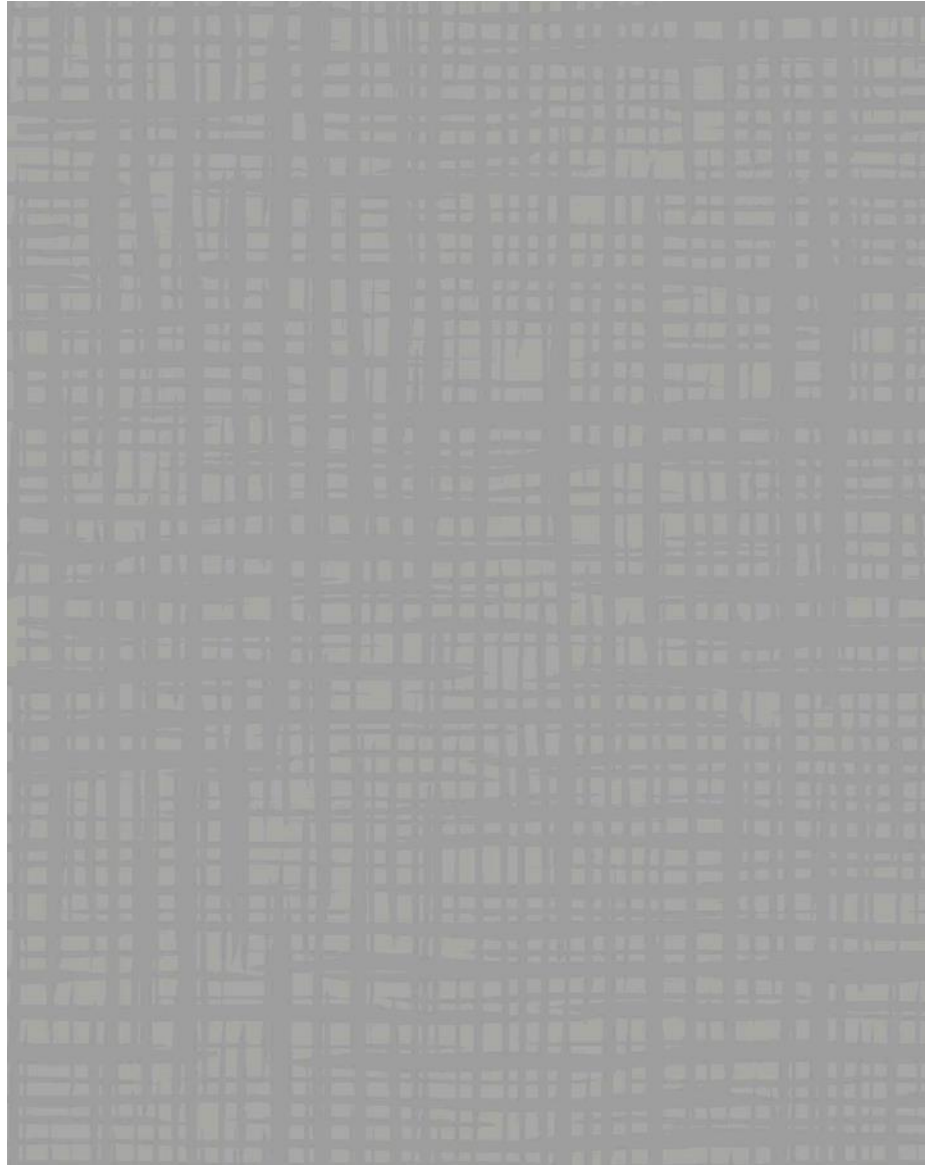


JEANS



CSS004223

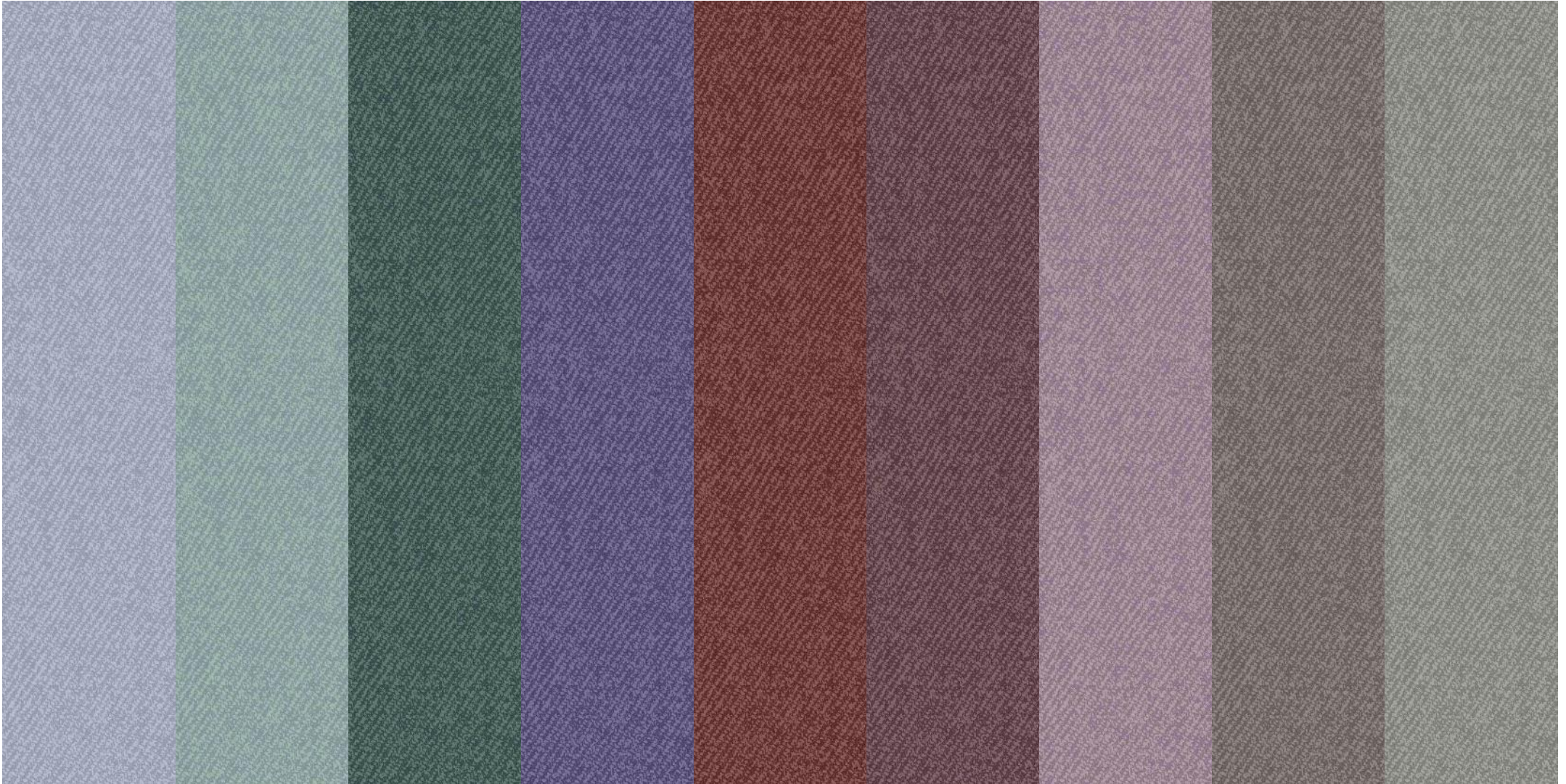
GLASGOW



CSS004232



CHIC MINIMAL: JEANS



CHIC MINIMAL : GLASGOW

